



ELECTRONIC COPY

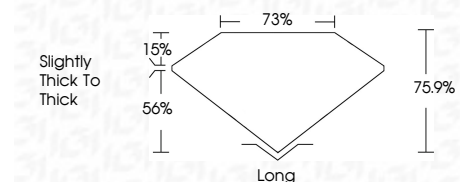
760539918
Report verification at igi.org



January 5, 2026
IGI Report Number **760539918**
Description **NATURAL DIAMOND**
Shape and Cutting Style **EMERALD CUT**
Measurements **6.31 X 4.69 X 3.56 MM**

GRADING RESULTS

Carat Weight **1.06 CARAT**
Color Grade **J**
Clarity Grade **VS 1**
Cut Grade **VERY GOOD**



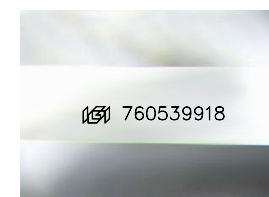
ADDITIONAL GRADING INFORMATION

Polish **EXCELLENT**
Symmetry **EXCELLENT**
Fluorescence **NONE**
Inscription(s) **IGI 760539918**



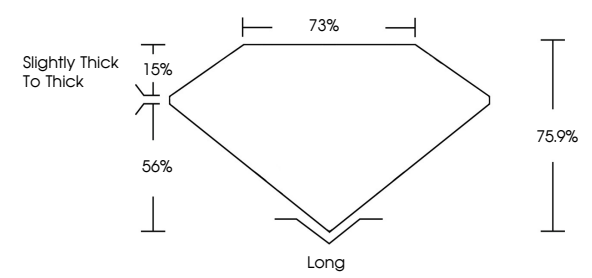
IGI

January 5, 2026
IGI Report No 760539918
EMERALD CUT
6.31 X 4.69 X 3.56 MM
Carat Weight **1.06 CARAT**
Color Grade **J**
Clarity Grade **VS 1**
Cut Grade **VERY GOOD**
Depth **76.1%**
Table **78%**
Girdle **Slightly thick to Thick**
Culet **Long**
Polish **EXCELLENT**
Symmetry **EXCELLENT**
Fluorescence **NONE**
Inscriptions(s) **IGI 760539918**

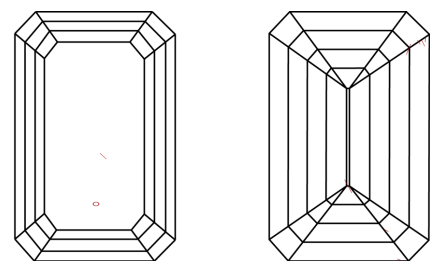


Sample Image Used

PROPORTIONS



CLARITY CHARACTERISTICS



KEY TO SYMBOLS

Red symbols indicate internal characteristics.
Green symbols indicate external characteristics.

COLOR

| D - F | G - J | K - M | N - R | S - Z | FANCY |
|-----------|----------------|-----------------|------------------|-------------|-------|
| Colorless | Near Colorless | Slightly Tinted | Very Light Color | Light Color | |

CLARITY

| FL | IF | VVS 1-2 | VS 1-2 | SI 1-2 | I 1-3 |
|----------|---------------------|-----------------------------|------------------------|-------------------|----------|
| Flawless | Internally Flawless | Very Very Slightly Included | Very Slightly Included | Slightly Included | Included |

