

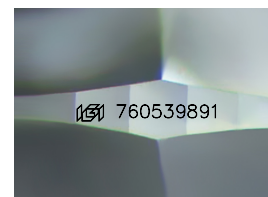
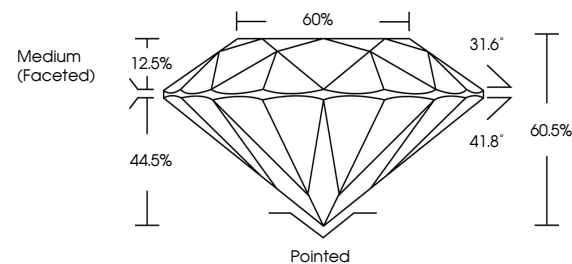


ELECTRONIC COPY

DIAMOND REPORT

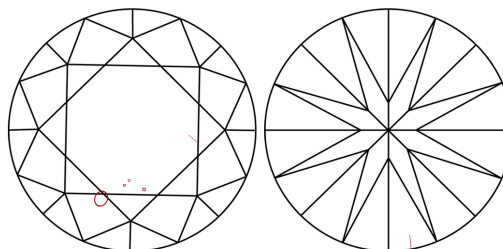
760539891
Report verification at igi.org

PROPORTIONS



Sample Image Used

CLARITY CHARACTERISTICS



KEY TO SYMBOLS

Red symbols indicate internal characteristics.
Green symbols indicate external characteristics.

COLOR

D - F	G - J	K - M	N - R	S - Z	FANCY
Colorless	Near Colorless	Slightly Tinted	Very Light Color	Light Color	

CLARITY

FL	IF	VVS ¹⁻²	VS ¹⁻²	SI ¹⁻²	I ¹⁻³
Flawless	Internally Flawless	Very Very Slightly Included	Very Slightly Included	Slightly Included	Included

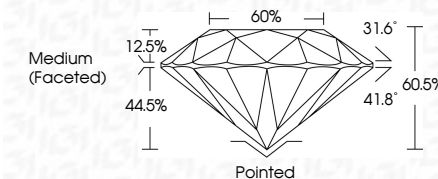
DIAMOND REPORT



January 6, 2026	
IGI Report Number	760539891
Description	NATURAL DIAMOND
Shape and Cutting Style	ROUND BRILLIANT
Measurements	8.18 - 8.21 X 4.96 MM

GRADING RESULTS

Carat Weight	2.02 CARATS
Color Grade	K
Clarity Grade	SI 2
Cut Grade	EXCELLENT



ADDITIONAL GRADING INFORMATION

Polish	EXCELLENT
Symmetry	EXCELLENT
Fluorescence	NONE
Inscription(s)	(15) 760539891



© IGI 2020, International Gemological Institute

FD - 10 20



THIS DOCUMENT WAS PRODUCED WITH THE FOLLOWING SECURITY MEASURES: SPECIAL DOCUMENT PAPER, INK SCREENS, WATERMARK, BACKGROUND DESIGNS, HOLOGRAM AND OTHER SECURITY FEATURES NOT LISTED AND DO EXCEED DOCUMENT SECURITY INDUSTRY GUIDELINE

www.igi.org

January 6, 2026
 IGI Report No 760539891
 BOUND BRILLIANT

1.18 - 8.21 X 4.95 MM	Carat Weight	2.02 CARATS
	Color Grade	K
	Clarity Grade	S12
	Cut Grade	EXCELLENT
	Depth	60.5%
	Table	60%
	Girdle	Medium (Faceted)
	Culet	Pointed
	Polish	EXCELLENT
	Symmetry	EXCELLENT
	Fluorescence	NONE