



ELECTRONIC COPY

DIAMOND REPORT

January 7, 2026	
IGI Report Number	760539531
Description	NATURAL DIAMOND
Shape and Cutting Style	ROUND BRILLIANT
Measurements	8.69 - 8.74 X 5.16 MM

GRADING RESULTS

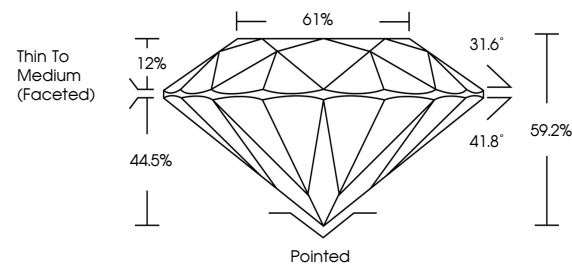
Carat Weight	2.32 CARATS
Color Grade	I
Clarity Grade	SI 1
Cut Grade	EXCELLENT

ADDITIONAL GRADING INFORMATION

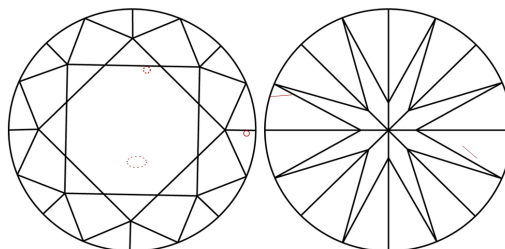
Polish	EXCELLENT
Symmetry	EXCELLENT
Fluorescence	NONE
Inscription(s)	151 760539531

760539531
Report verification at igi.org

PROPORTIONS

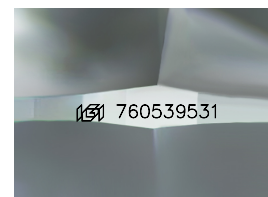


CLARITY CHARACTERISTICS



KEY TO SYMBOLS

Red symbols indicate internal characteristics.
Green symbols indicate external characteristics.



Sample Image Used

COLOR

D - F	G - J	K - M	N - R	S - Z	FANCY
Colorless	Near Colorless	Slightly Tinted	Very Light Color	Light Color	

CLARITY

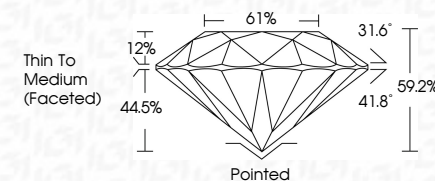
FL	IF	VVS ¹⁻²	VS ¹⁻²	SI ¹⁻²	I ¹⁻³
Flawless	Internally Flawless	Very Very Slightly Included	Very Slightly Included	Slightly Included	Included



January 7, 2026	
IGI Report Number	760539531
Description	NATURAL DIAMOND
Shape and Cutting Style	ROUND BRILLIANT
Measurements	8.69 - 8.74 X 5.16 MM

GRADING RESULTS

Carat Weight	2.32 CARATS
Color Grade	I
Clarity Grade	SI 1
Cut Grade	EXCELLENT



ADDITIONAL GRADING INFORMATION

Polish	EXCELLENT
Symmetry	EXCELLENT
Fluorescence	NONE
Inscription(s)	(151) 760539531



IG



© IGI 2020, International Gemological Institute

FD - 10 20

www.igi.org



THIS DOCUMENT WAS PRODUCED WITH THE FOLLOWING SECURITY MEASURES: SPECIAL DOCUMENT PAPER, INK SCREENS, WATERMARK, BACKGROUND DESIGNS, HOLOGRAM AND OTHER SECURITY FEATURES NOT LISTED AND DO EXCEED DOCUMENT SECURITY INDUSTRY GUIDELINES

January 7, 2026

January 7, 2026
 CGI Report No 760539531
 SHINING BRILLIANT

3.69 - 8.74 X 5.16 MM
Carat Weight 2.32 CARATS

Color Grade	I
Clarity Grade	G1

Clarity Grade	S1
Out Grade	EXCELLENT

Cut Grade	EXCELLENT
Depth	59.2%

Depth	59.2%
Table	61%
Girdle	Table To Medium

Girdle

	Pointed	(Faceted)
Culet		

Culet	Pointed
Polish	EXCELLENT
Symmetry	EXCELLENT

	EXCELLENT	NONE
Symmetry		
Fluorescence		

Fluorescence	NONE
Inscription(s)	(87) 760539531