



ELECTRONIC COPY

760534754
Report verification at igi.org



March 31, 2026
IGI Report Number **760534754**
Description **NATURAL DIAMOND**
Shape and Cutting Style **CUSHION MODIFIED BRILLIANT**
Measurements **7.96 X 6.14 X 4.08 MM**
GRADING RESULTS
Carat Weight **1.54 CARAT**
Color Grade **J**
Clarity Grade **SI 1**
Cut Grade **VERY GOOD**

DIAMOND REPORT

March 31, 2026
IGI Report Number **760534754**
Description **NATURAL DIAMOND**
Shape and Cutting Style **CUSHION MODIFIED BRILLIANT**
Measurements **7.96 X 6.14 X 4.08 MM**

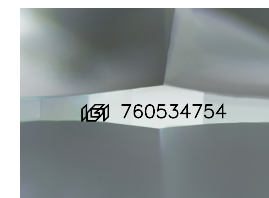
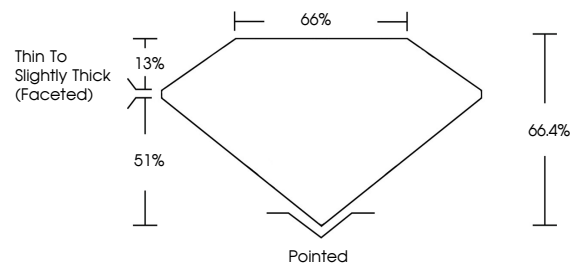
GRADING RESULTS

Carat Weight **1.54 CARAT**
Color Grade **J**
Clarity Grade **SI 1**
Cut Grade **VERY GOOD**

ADDITIONAL GRADING INFORMATION

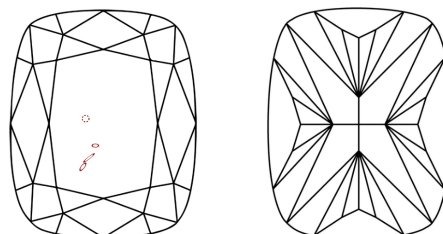
Polish **EXCELLENT**
Symmetry **EXCELLENT**
Fluorescence **SLIGHT**
Inscription(s) **760534754**

PROPORTIONS



Sample Image Used

CLARITY CHARACTERISTICS



KEY TO SYMBOLS

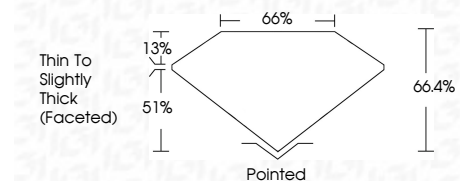
Red symbols indicate internal characteristics.
Green symbols indicate external characteristics.

COLOR

D - F	G - J	K - M	N - R	S - Z	FANCY
Colorless	Near Colorless	Slightly Tinted	Very Light Color	Light Color	

CLARITY

FL	IF	VVS ¹⁻²	VS ¹⁻²	SI ¹⁻²	I ¹⁻³
Flawless	Internally Flawless	Very Very Slightly Included	Very Slightly Included	Slightly Included	Included



ADDITIONAL GRADING INFORMATION

Polish **EXCELLENT**
Symmetry **EXCELLENT**
Fluorescence **SLIGHT**
Inscription(s) **760534754**



IGI



March 31, 2026
IGI Report No 760534754
CUSHION MODIFIED BRILLIANT
7.96 X 6.14 X 4.08 MM
1.54 CARAT
J
SI 1
VERY GOOD
66.4%
66%
Thin To Slightly Thick (Faceted)
Pointed
EXCELLENT
EXCELLENT
SLIGHT
SLIGHT
 760534754