



**ELECTRONIC COPY**

760534685  
Report verification at [igi.org](http://igi.org)

**DIAMOND REPORT**

March 24, 2026  
IGI Report Number **760534685**  
Description **NATURAL DIAMOND**  
Shape and Cutting Style **EMERALD CUT**  
Measurements **9.44 X 6.84 X 4.82 MM**

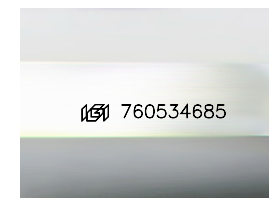
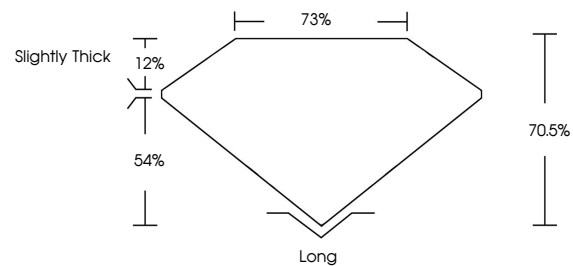
**GRADING RESULTS**

Carat Weight **3.01 CARATS**  
Color Grade **L**  
Clarity Grade **VS 2**  
Cut Grade **VERY GOOD**

**ADDITIONAL GRADING INFORMATION**

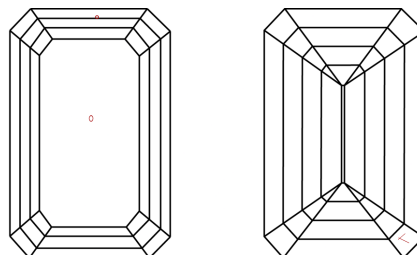
Polish **EXCELLENT**  
Symmetry **EXCELLENT**  
Fluorescence **VERY SLIGHT**  
Inscription(s) **760534685**

**PROPORTIONS**



Sample Image Used

**CLARITY CHARACTERISTICS**



**KEY TO SYMBOLS**

Red symbols indicate internal characteristics.  
Green symbols indicate external characteristics.

**COLOR**

D - F	G - J	K - M	N - R	S - Z	FANCY
Colorless	Near Colorless	Slightly Tinted	Very Light Color	Light Color	

**CLARITY**

FL	IF	VVS 1-2	VS 1-2	SI 1-2	I 1-3
Flawless	Internally Flawless	Very Very Slightly Included	Very Slightly Included	Slightly Included	Included



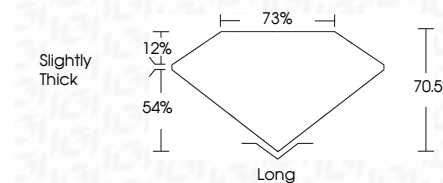
March 24, 2026  
IGI Report Number **760534685**  
Description **NATURAL DIAMOND**  
Shape and Cutting Style **EMERALD CUT**  
Measurements **9.44 X 6.84 X 4.82 MM**

**GRADING RESULTS**

Carat Weight **3.01 CARATS**  
Color Grade **L**  
Clarity Grade **VS 2**  
Cut Grade **VERY GOOD**

**ADDITIONAL GRADING INFORMATION**

Polish **EXCELLENT**  
Symmetry **EXCELLENT**  
Fluorescence **VERY SLIGHT**  
Inscription(s) **760534685**



**IGI**



March 24, 2026	IGI Report No 760534685	EMERALD CUT	9.44 X 6.84 X 4.82 MM	3.01 CARATS	L	VS 2	VERY GOOD	70.5%	73%	Slightly Thick	Long	EXCELLENT	EXCELLENT	VERY SLIGHT	760534685
Color Grade	Clarity Grade	Depth	Table	Grade	Culet	Polish	Symmetry	Fluorescence	Inscription(s)						