



**ELECTRONIC COPY**

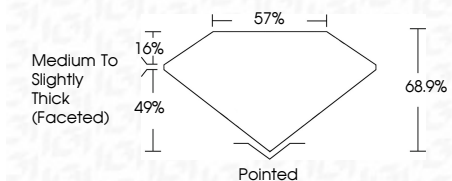
760534671  
Report verification at [igi.org](http://igi.org)



March 25, 2026  
IGI Report Number **760534671**  
Description **NATURAL DIAMOND**  
Shape and Cutting Style **CUSHION MODIFIED BRILLIANT**  
Measurements **7.39 X 5.91 X 4.07 MM**

**GRADING RESULTS**

Carat Weight **1.54 CARAT**  
Color Grade **I**  
Clarity Grade **SI 1**  
Cut Grade **VERY GOOD**



**ADDITIONAL GRADING INFORMATION**

Polish **EXCELLENT**  
Symmetry **EXCELLENT**  
Fluorescence **SLIGHT**  
Inscription(s) **(IGI) 760534671**

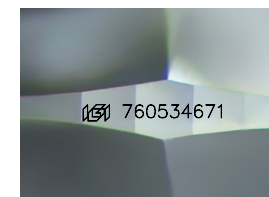
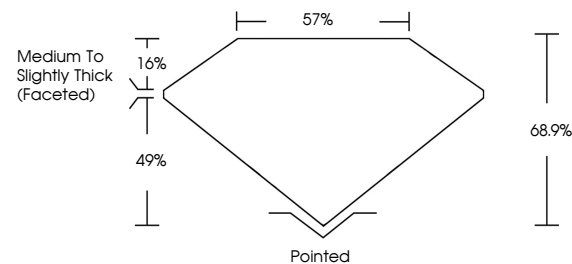


**IGI**



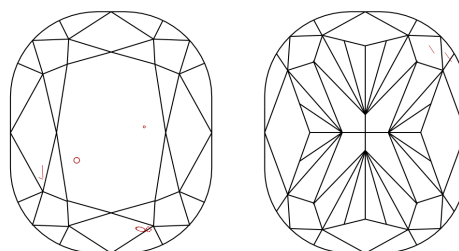
March 25, 2026  
IGI Report No 760534671  
**CUSHION MODIFIED BRILLIANT**  
7.39 X 5.91 X 4.07 MM  
1.54 CARAT  
Color Grade **I**  
Clarity Grade **SI 1**  
Depth **68.9%**  
Table **57%**  
Girdle **Medium To Slightly Thick (Faceted)**  
Culet **Pointed**  
Polish **EXCELLENT**  
Symmetry **EXCELLENT**  
Fluorescence **SLIGHT**  
Inscription(s) **(IGI) 760534671**

**PROPORTIONS**



Sample Image Used

**CLARITY CHARACTERISTICS**



**KEY TO SYMBOLS**

Red symbols indicate internal characteristics.  
Green symbols indicate external characteristics.

**COLOR**

D - F	G - J	K - M	N - R	S - Z	FANCY
Colorless	Near Colorless	Slightly Tinted	Very Light Color	Light Color	

**CLARITY**

FL	IF	VVS <sup>1-2</sup>	VS <sup>1-2</sup>	SI <sup>1-2</sup>	I <sup>1-3</sup>
Flawless	Internally Flawless	Very Very Slightly Included	Very Slightly Included	Slightly Included	Included

**DIAMOND REPORT**

March 25, 2026  
IGI Report Number **760534671**  
Description **NATURAL DIAMOND**  
Shape and Cutting Style **CUSHION MODIFIED BRILLIANT**  
Measurements **7.39 X 5.91 X 4.07 MM**

**GRADING RESULTS**

Carat Weight **1.54 CARAT**  
Color Grade **I**  
Clarity Grade **SI 1**  
Cut Grade **VERY GOOD**

**ADDITIONAL GRADING INFORMATION**

Polish **EXCELLENT**  
Symmetry **EXCELLENT**  
Fluorescence **SLIGHT**  
Inscription(s) **(IGI) 760534671**