



ELECTRONIC COPY

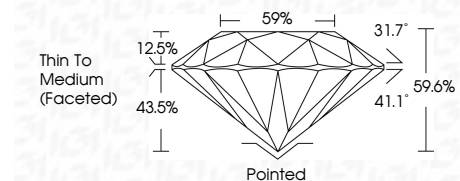
760534554
Report verification at igi.org



March 14, 2026
IGI Report Number **760534554**
Description **NATURAL DIAMOND**
Shape and Cutting Style **ROUND BRILLIANT**
Measurements **6.55 - 6.59 X 3.91 MM**

GRADING RESULTS

Carat Weight **1.02 CARAT**
Color Grade **H**
Clarity Grade **VS 2**
Cut Grade **EXCELLENT**



ADDITIONAL GRADING INFORMATION

Polish **EXCELLENT**
Symmetry **EXCELLENT**
Fluorescence **NONE**
Inscription(s) **(IGI) 760534554**



IGI

March 14, 2026
IGI Report No 760534554
ROUND BRILLIANT
6.55 - 6.59 X 3.91 MM
1.02 CARAT
H
VS 2
EXCELLENT
59.6%
59%
Thin To Medium (Faceted)
Pointed
EXCELLENT
EXCELLENT
NONE
(IGI) 760534554

DIAMOND REPORT

March 14, 2026
IGI Report Number **760534554**
Description **NATURAL DIAMOND**
Shape and Cutting Style **ROUND BRILLIANT**
Measurements **6.55 - 6.59 X 3.91 MM**

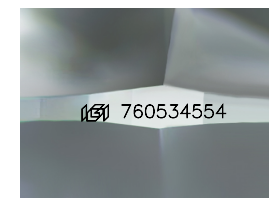
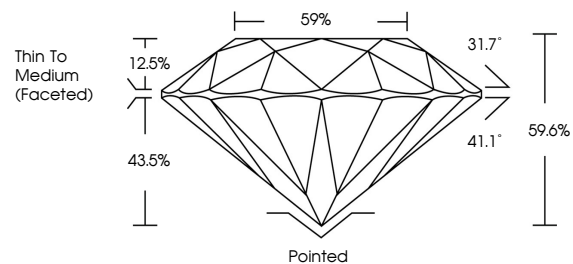
GRADING RESULTS

Carat Weight **1.02 CARAT**
Color Grade **H**
Clarity Grade **VS 2**
Cut Grade **EXCELLENT**

ADDITIONAL GRADING INFORMATION

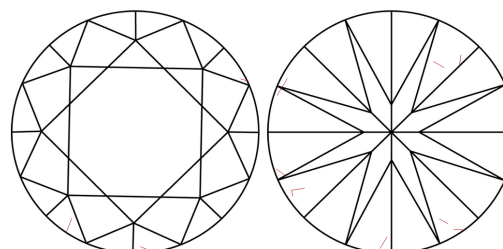
Polish **EXCELLENT**
Symmetry **EXCELLENT**
Fluorescence **NONE**
Inscription(s) **(IGI) 760534554**

PROPORTIONS



Sample Image Used

CLARITY CHARACTERISTICS



KEY TO SYMBOLS

Red symbols indicate internal characteristics.
Green symbols indicate external characteristics.

COLOR

D - F	G - J	K - M	N - R	S - Z	FANCY
Colorless	Near Colorless	Slightly Tinted	Very Light Color	Light Color	

CLARITY

FL	IF	VVS 1-2	VS 1-2	SI 1-2	I 1-3
Flawless	Internally Flawless	Very Very Slightly Included	Very Slightly Included	Slightly Included	Included

