



**ELECTRONIC COPY**

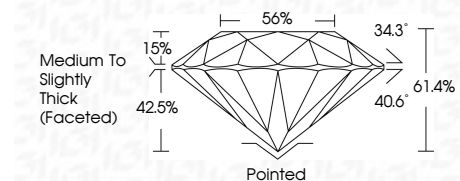
760534551  
Report verification at igi.org



March 14, 2026  
IGI Report Number **760534551**  
Description **NATURAL DIAMOND**  
Shape and Cutting Style **ROUND BRILLIANT**  
Measurements **7.56 - 7.63 X 4.66 MM**

**GRADING RESULTS**

Carat Weight **1.67 CARAT**  
Color Grade **K**  
Clarity Grade **SI 2**  
Cut Grade **EXCELLENT**



**ADDITIONAL GRADING INFORMATION**

Polish **EXCELLENT**  
Symmetry **EXCELLENT**  
Fluorescence **NONE**  
Inscription(s) **IGI 760534551**  
Comments: IDEAL CUT ROUND BRILLIANT



**IGI**

March 14, 2026  
IGI Report No 760534551  
**ROUND BRILLIANT**  
1.67 CARAT  
K  
SI 2  
EXCELLENT  
61.4%  
56%  
Medium To Slightly Thick (Faceted)  
Pointed  
EXCELLENT  
EXCELLENT  
NONE  
IGI 760534551  
Comments: IDEAL CUT ROUND BRILLIANT

**DIAMOND REPORT**

March 14, 2026  
IGI Report Number **760534551**  
Description **NATURAL DIAMOND**  
Shape and Cutting Style **ROUND BRILLIANT**  
Measurements **7.56 - 7.63 X 4.66 MM**

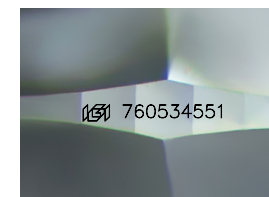
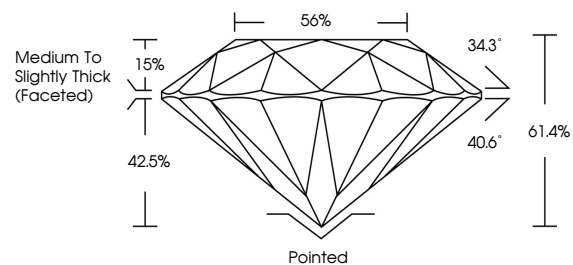
**GRADING RESULTS**

Carat Weight **1.67 CARAT**  
Color Grade **K**  
Clarity Grade **SI 2**  
Cut Grade **EXCELLENT**

**ADDITIONAL GRADING INFORMATION**

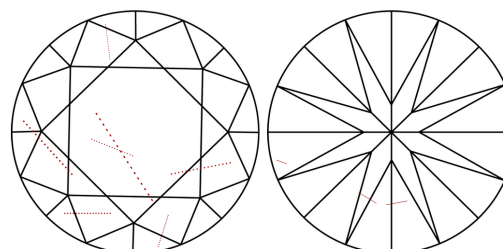
Polish **EXCELLENT**  
Symmetry **EXCELLENT**  
Fluorescence **NONE**  
Inscription(s) **IGI 760534551**  
Comments: IDEAL CUT ROUND BRILLIANT

**PROPORTIONS**



Sample Image Used

**CLARITY CHARACTERISTICS**



**KEY TO SYMBOLS**

Red symbols indicate internal characteristics.  
Green symbols indicate external characteristics.

**COLOR**

D - F	G - J	K - M	N - R	S - Z	FANCY
Colorless	Near Colorless	Slightly Tinted	Very Light Color	Light Color	

**CLARITY**

FL	IF	VVS <sup>1-2</sup>	VS <sup>1-2</sup>	SI <sup>1-2</sup>	I <sup>1-3</sup>
Flawless	Internally Flawless	Very Very Slightly Included	Very Slightly Included	Slightly Included	Included

