



ELECTRONIC COPY

760516977
Report verification at igi.org

DIAMOND REPORT

February 6, 2026
IGI Report Number **760516977**
Description **NATURAL DIAMOND**
Shape and Cutting Style **EMERALD CUT**
Measurements **8.13 X 5.59 X 3.65 MM**

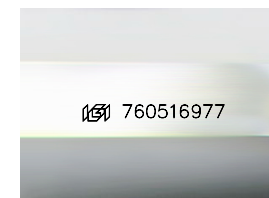
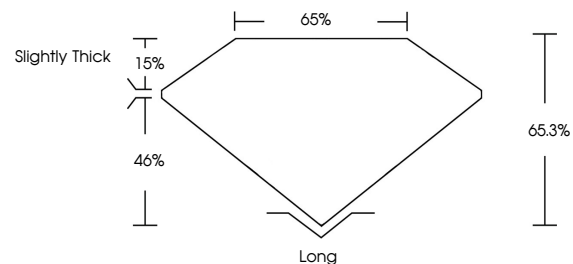
GRADING RESULTS

Carat Weight **1.70 CARAT**
Color Grade **K**
Clarity Grade **VVS 2**
Cut Grade **VERY GOOD**

ADDITIONAL GRADING INFORMATION

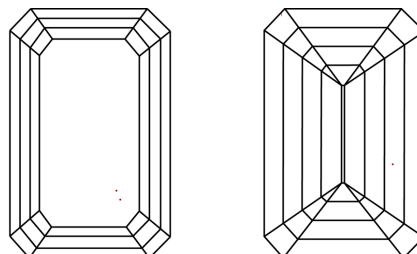
Polish **EXCELLENT**
Symmetry **EXCELLENT**
Fluorescence **NONE**
Inscription(s) **760516977**

PROPORTIONS



Sample Image Used

CLARITY CHARACTERISTICS



KEY TO SYMBOLS

Red symbols indicate internal characteristics.
Green symbols indicate external characteristics.

COLOR

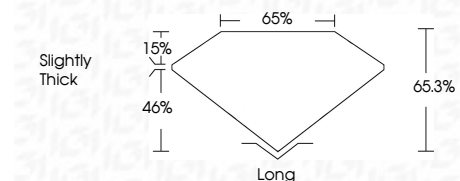
D - F	G - J	K - M	N - R	S - Z	FANCY
Colorless	Near Colorless	Slightly Tinted	Very Light Color	Light Color	

CLARITY

FL	IF	VVS 1-2	VS 1-2	SI 1-2	I 1-3
Flawless	Internally Flawless	Very Very Slightly Included	Very Slightly Included	Slightly Included	Included



February 6, 2026
IGI Report Number **760516977**
Description **NATURAL DIAMOND**
Shape and Cutting Style **EMERALD CUT**
Measurements **8.13 X 5.59 X 3.65 MM**
GRADING RESULTS
Carat Weight **1.70 CARAT**
Color Grade **K**
Clarity Grade **VVS 2**
Cut Grade **VERY GOOD**



ADDITIONAL GRADING INFORMATION

Polish **EXCELLENT**
Symmetry **EXCELLENT**
Fluorescence **NONE**
Inscription(s) **760516977**



IGI



February 6, 2026
IGI Report No 760516977
EMERALD CUT
8.13 X 5.59 X 3.65 MM
1.70 CARAT
K
VVS 2
VERY GOOD
66.3%
65%
Slightly Thick
Long
EXCELLENT
EXCELLENT
NONE
 760516977