



ELECTRONIC COPY

760516880
Report verification at igi.org



February 7, 2026

IGI Report Number **760516880**

Description **NATURAL DIAMOND**

Shape and Cutting Style **EMERALD CUT**

Measurements **8.05 X 5.22 X 3.47 MM**

GRADING RESULTS

Carat Weight **1.50 CARAT**

Color Grade **J**

Clarity Grade **VVS 1**

Cut Grade **VERY GOOD**

DIAMOND REPORT

February 7, 2026

IGI Report Number **760516880**

Description **NATURAL DIAMOND**

Shape and Cutting Style **EMERALD CUT**

Measurements **8.05 X 5.22 X 3.47 MM**

GRADING RESULTS

Carat Weight **1.50 CARAT**

Color Grade **J**

Clarity Grade **VVS 1**

Cut Grade **VERY GOOD**

ADDITIONAL GRADING INFORMATION

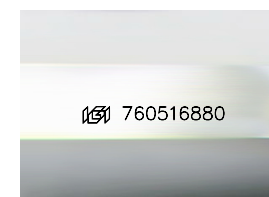
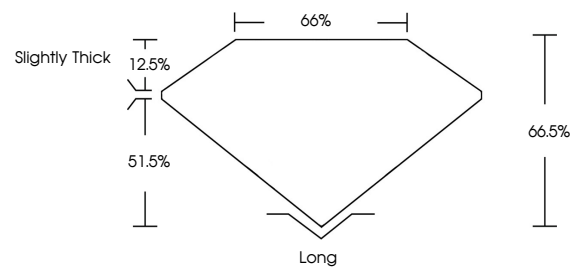
Polish **EXCELLENT**

Symmetry **EXCELLENT**

Fluorescence **NONE**

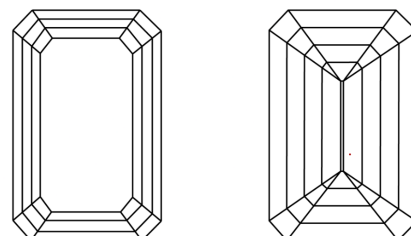
Inscription(s) **760516880**

PROPORTIONS



Sample Image Used

CLARITY CHARACTERISTICS



KEY TO SYMBOLS

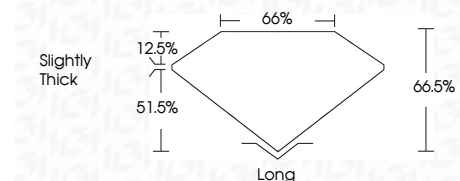
Red symbols indicate internal characteristics.
Green symbols indicate external characteristics.

COLOR

D - F	G - J	K - M	N - R	S - Z	FANCY
Colorless	Near Colorless	Slightly Tinted	Very Light Color	Light Color	

CLARITY

FL	IF	VVS 1-2	VS 1-2	SI 1-2	I 1-3
Flawless	Internally Flawless	Very Very Slightly Included	Very Slightly Included	Slightly Included	Included



ADDITIONAL GRADING INFORMATION

Polish **EXCELLENT**

Symmetry **EXCELLENT**

Fluorescence **NONE**

Inscription(s) **760516880**



IGI



February 7, 2026
IGI Report No 760516880
EMERALD CUT

1.50 CARAT
J

8.05 X 5.22 X 3.47 MM

Color Grade **VVS 1**

Clarity Grade **VERY GOOD**

Depth 66.5%

Table 66%

Girdle Slightly Thick

Culet Long

Polish **EXCELLENT**

Symmetry **EXCELLENT**

Fluorescence **NONE**

Inscription(s) 760516880