



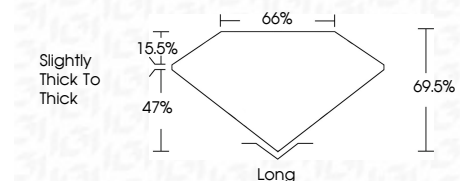
**ELECTRONIC COPY**

760516851  
Report verification at [igi.org](http://igi.org)



February 9, 2026  
IGI Report Number **760516851**  
Description **NATURAL DIAMOND**  
Shape and Cutting Style **EMERALD CUT**  
Measurements **7.30 X 5.28 X 3.67 MM**

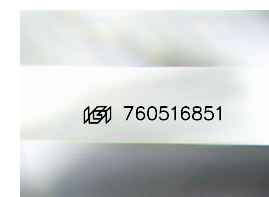
**GRADING RESULTS**  
Carat Weight **1.51 CARAT**  
Color Grade **I**  
Clarity Grade **VVS 2**  
Cut Grade **VERY GOOD**



**ADDITIONAL GRADING INFORMATION**  
Polish **EXCELLENT**  
Symmetry **EXCELLENT**  
Fluorescence **NONE**  
Inscription(s) **IGI 760516851**

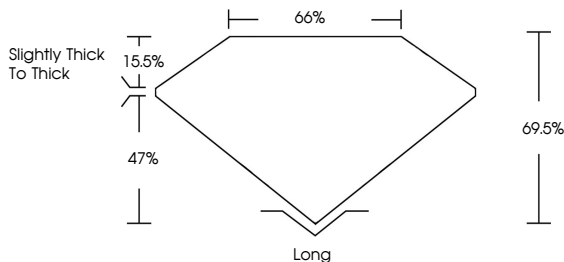


February 9, 2026  
IGI Report No 760516851  
**EMERALD CUT**  
Carat Weight **1.51 CARAT**  
Color Grade **I**  
Clarity Grade **VVS 2**  
Depth **69.5%**  
Table **66%**  
Girdle **Slightly thick to thick**  
Culet **Long**  
Polish **EXCELLENT**  
Symmetry **EXCELLENT**  
Fluorescence **NONE**  
Inscriptions(s) **IGI 760516851**

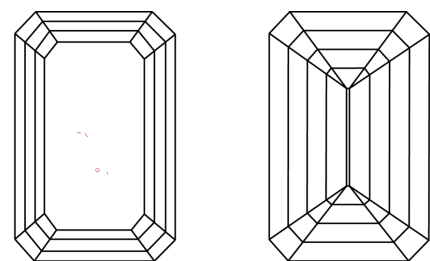


Sample Image Used

**PROPORTIONS**



**CLARITY CHARACTERISTICS**



**KEY TO SYMBOLS**  
Red symbols indicate internal characteristics.  
Green symbols indicate external characteristics.

**COLOR**

D - F	G - J	K - M	N - R	S - Z	FANCY
Colorless	Near Colorless	Slightly Tinted	Very Light Color	Light Color	

**CLARITY**

FL	IF	VVS 1-2	VS 1-2	SI 1-2	I 1-3
Flawless	Internally Flawless	Very Very Slightly Included	Very Slightly Included	Slightly Included	Included

