



ELECTRONIC COPY

760516490
Report verification at igi.org

DIAMOND REPORT

January 5, 2026
IGI Report Number **760516490**
Description **NATURAL DIAMOND**
Shape and Cutting Style **EMERALD CUT**
Measurements **8.03 X 5.31 X 3.43 MM**

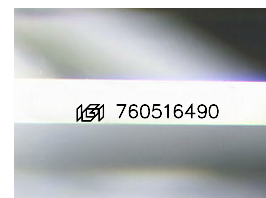
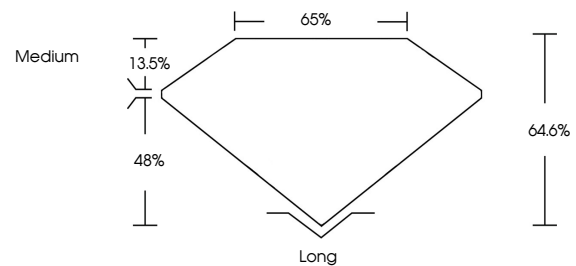
GRADING RESULTS

Carat Weight **1.50 CARAT**
Color Grade **J**
Clarity Grade **VS 1**
Cut Grade **EXCELLENT**

ADDITIONAL GRADING INFORMATION

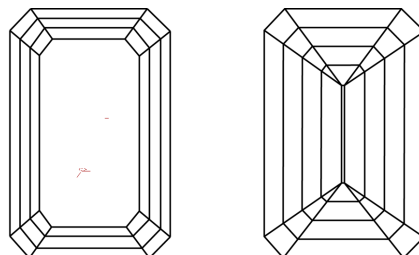
Polish **EXCELLENT**
Symmetry **EXCELLENT**
Fluorescence **NONE**
Inscription(s) **760516490**

PROPORTIONS



Sample Image Used

CLARITY CHARACTERISTICS



KEY TO SYMBOLS

Red symbols indicate internal characteristics.
Green symbols indicate external characteristics.

COLOR

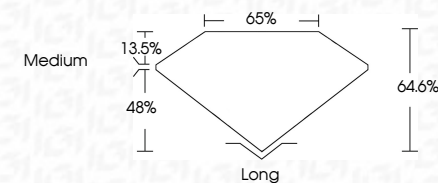
D - F	G - J	K - M	N - R	S - Z	FANCY
Colorless	Near Colorless	Slightly Tinted	Very Light Color	Light Color	

CLARITY

FL	IF	VVS 1-2	VS 1-2	SI 1-2	I 1-3
Flawless	Internally Flawless	Very Very Slightly Included	Very Slightly Included	Slightly Included	Included



January 5, 2026
IGI Report Number **760516490**
Description **NATURAL DIAMOND**
Shape and Cutting Style **EMERALD CUT**
Measurements **8.03 X 5.31 X 3.43 MM**
GRADING RESULTS
Carat Weight **1.50 CARAT**
Color Grade **J**
Clarity Grade **VS 1**
Cut Grade **EXCELLENT**



ADDITIONAL GRADING INFORMATION

Polish **EXCELLENT**
Symmetry **EXCELLENT**
Fluorescence **NONE**
Inscription(s) **760516490**



IGI



January 5, 2026
IGI Report No 760516490
EMERALD CUT
8.03 X 5.31 X 3.43 MM
1.50 CARAT
Color Grade **J**
Clarity Grade **VS 1**
Depth **48%**
Table **65%**
Girdle **Medium**
Culet **Long**
Polish **EXCELLENT**
Symmetry **EXCELLENT**
Fluorescence **NONE**
Inscriptions(s) **760516490**