



ELECTRONIC COPY

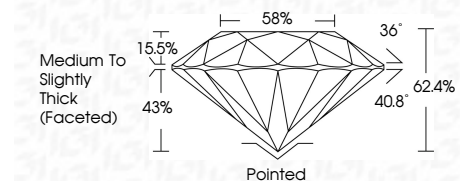
759514271
Report verification at igi.org



January 6, 2026
IGI Report Number **759514271**
Description **NATURAL DIAMOND**
Shape and Cutting Style **ROUND BRILLIANT**
Measurements **6.95 - 6.98 X 4.35 MM**

GRADING RESULTS

Carat Weight **1.31 CARAT**
Color Grade **H**
Clarity Grade **VVS 1**
Cut Grade **EXCELLENT**



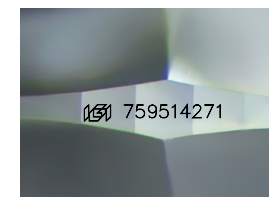
ADDITIONAL GRADING INFORMATION

Polish **EXCELLENT**
Symmetry **EXCELLENT**
Fluorescence **NONE**
Inscription(s) **(IGI) 759514271**
Comments: IDEAL CUT ROUND BRILLIANT



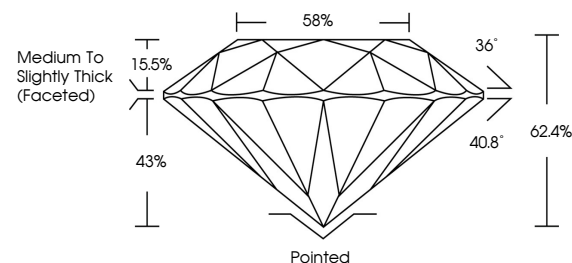
IGI

January 6, 2026
IGI Report No 759514271
ROUND BRILLIANT
6.95 - 6.98 X 4.35 MM
1.31 CARAT H
Color Grade EXCELLENT
Clarity Grade VVS 1
Depth 62.4%
Table 88%
Girdle Medium To Slightly Thick (Faceted)
Culet Pointed
Polish EXCELLENT
Symmetry EXCELLENT
Fluorescence NONE
Inscriptions(s) (IGI) 759514271
Comments: IDEAL CUT ROUND BRILLIANT

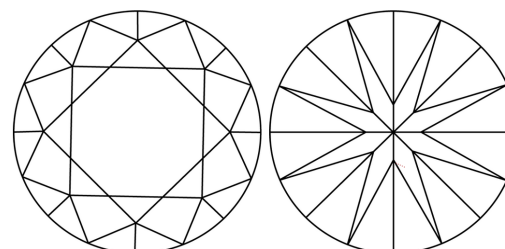


Sample Image Used

PROPORTIONS



CLARITY CHARACTERISTICS



KEY TO SYMBOLS

Red symbols indicate internal characteristics.
Green symbols indicate external characteristics.

COLOR

D - F	G - J	K - M	N - R	S - Z	FANCY
Colorless	Near Colorless	Slightly Tinted	Very Light Color	Light Color	

CLARITY

FL	IF	VVS 1-2	VS 1-2	SI 1-2	I 1-3
Flawless	Internally Flawless	Very Very Slightly Included	Very Slightly Included	Slightly Included	Included

