



ELECTRONIC COPY

758571276
Report verification at igi.org



April 7, 2026

IGI Report Number **758571276**

Description **NATURAL DIAMOND**

Shape and Cutting Style **ROUND BRILLIANT**

Measurements **7.99 - 8.04 X 5.00 MM**

GRADING RESULTS

Carat Weight **2.02 CARATS**

Color Grade **I**

Clarity Grade **VS 2**

Cut Grade **EXCELLENT**

April 7, 2026

IGI Report Number **758571276**

Description **NATURAL DIAMOND**

Shape and Cutting Style **ROUND BRILLIANT**

Measurements **7.99 - 8.04 X 5.00 MM**

GRADING RESULTS

Carat Weight **2.02 CARATS**

Color Grade **I**

Clarity Grade **VS 2**

Cut Grade **EXCELLENT**

ADDITIONAL GRADING INFORMATION

Polish **EXCELLENT**

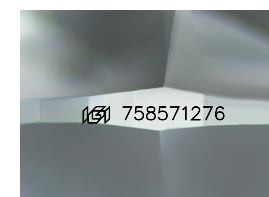
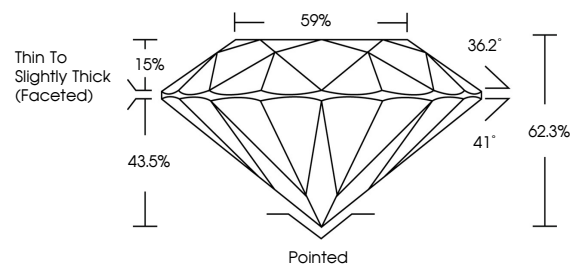
Symmetry **EXCELLENT**

Fluorescence **NONE**

Inscription(s) **758571276**

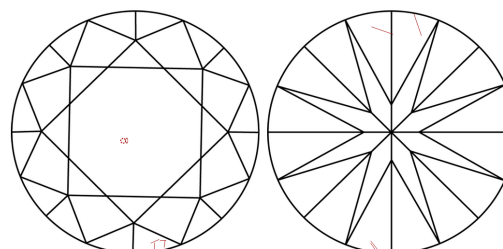
Comments: IDEAL CUT ROUND BRILLIANT

PROPORTIONS



Sample Image Used

CLARITY CHARACTERISTICS



KEY TO SYMBOLS

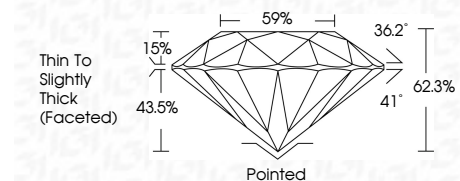
Red symbols indicate internal characteristics.
Green symbols indicate external characteristics.

COLOR

D - F	G - J	K - M	N - R	S - Z	FANCY
Colorless	Near Colorless	Slightly Tinted	Very Light Color	Light Color	

CLARITY

FL	IF	VVS ¹⁻²	VS ¹⁻²	SI ¹⁻²	I ¹⁻³
Flawless	Internally Flawless	Very Very Slightly Included	Very Slightly Included	Slightly Included	Included



ADDITIONAL GRADING INFORMATION

Polish **EXCELLENT**

Symmetry **EXCELLENT**

Fluorescence **NONE**

Inscription(s) **758571276**

Comments: IDEAL CUT ROUND BRILLIANT



IGI



April 7, 2026
IGI Report No 758571276
ROUND BRILLIANT
2.02 CARATS
I
VS 2
EXCELLENT
62.3%
59%
Thin To Slightly Thick (Faceted)
Pointed
EXCELLENT
EXCELLENT
NONE
IGI 758571276

Comments: IDEAL CUT ROUND BRILLIANT