



**ELECTRONIC COPY**

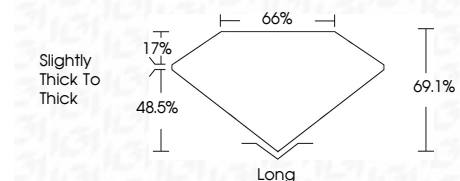
758571005  
Report verification at [igi.org](http://igi.org)



January 13, 2026  
IGI Report Number **758571005**  
Description **NATURAL DIAMOND**  
Shape and Cutting Style **EMERALD CUT**  
Measurements **8.74 X 6.37 X 4.40 MM**

**GRADING RESULTS**

Carat Weight **2.51 CARATS**  
Color Grade **I**  
Clarity Grade **VS 2**  
Cut Grade **VERY GOOD**



**ADDITIONAL GRADING INFORMATION**

Polish **EXCELLENT**  
Symmetry **EXCELLENT**  
Fluorescence **NONE**  
Inscription(s) **(IGI) 758571005**



**IGI**

January 13, 2026  
IGI Report No 758571005  
**EMERALD CUT**  
8.74 X 6.37 X 4.40 MM  
2.51 CARATS  
Color Grade **I**  
Clarity Grade **VS 2**  
Cut Grade **VERY GOOD**  
Depth **69.1%**  
Table **66%**  
Girdle **Slightly thick to Thick**  
Culet **Long**  
Polish **EXCELLENT**  
Symmetry **EXCELLENT**  
Fluorescence **NONE**  
Inscriptions(s) **(IGI) 758571005**

**DIAMOND REPORT**

January 13, 2026  
IGI Report Number **758571005**  
Description **NATURAL DIAMOND**  
Shape and Cutting Style **EMERALD CUT**  
Measurements **8.74 X 6.37 X 4.40 MM**

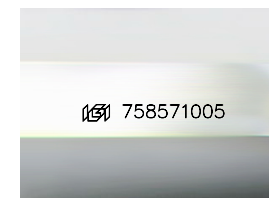
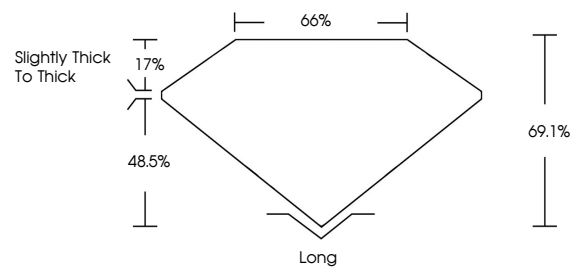
**GRADING RESULTS**

Carat Weight **2.51 CARATS**  
Color Grade **I**  
Clarity Grade **VS 2**  
Cut Grade **VERY GOOD**

**ADDITIONAL GRADING INFORMATION**

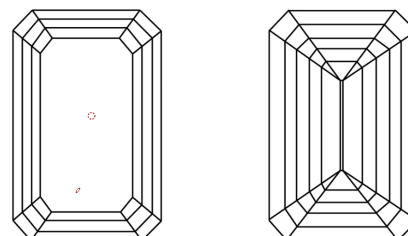
Polish **EXCELLENT**  
Symmetry **EXCELLENT**  
Fluorescence **NONE**  
Inscription(s) **(IGI) 758571005**

**PROPORTIONS**



Sample Image Used

**CLARITY CHARACTERISTICS**



**KEY TO SYMBOLS**

Red symbols indicate internal characteristics.  
Green symbols indicate external characteristics.

**COLOR**

D - F	G - J	K - M	N - R	S - Z	FANCY
Colorless	Near Colorless	Slightly Tinted	Very Light Color	Light Color	

**CLARITY**

FL	IF	VVS <sup>1-2</sup>	VS <sup>1-2</sup>	SI <sup>1-2</sup>	I <sup>1-3</sup>
Flawless	Internally Flawless	Very Very Slightly Included	Very Slightly Included	Slightly Included	Included

