



# INTERNATIONAL GEMOLOGICAL INSTITUTE

## DIAMOND REPORT

December 31, 2025

IGI Report Number

757513925

Description

NATURAL DIAMOND

Shape and Cutting Style

ROUND BRILLIANT

Measurements

5.19 - 5.23 X 3.26 MM

## GRADING RESULTS

Carat Weight

0.55 CARAT

Color Grade

H

Clarity Grade

VVS 2

Cut Grade

EXCELLENT

## ADDITIONAL GRADING INFORMATION

Polish

EXCELLENT

Symmetry

EXCELLENT

Fluorescence

NONE

Identification Features

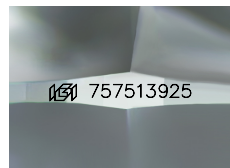
NEEDLE, CLOUD

Inscription(s)

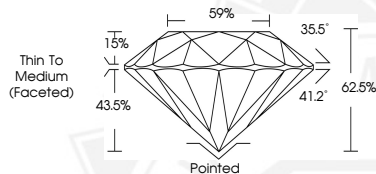
757513925

Comments: IDEAL CUT ROUND BRILLIANT

ELECTRONIC COPY



Sample Image Used



December 31, 2025

IGI Report Number 757513925

ROUND BRILLIANT

NATURAL DIAMOND

5.19 - 5.23 X 3.26 MM

Carat Weight 0.55 CARAT

Color Grade H

Clarity Grade VVS 2

Cut Grade EXCELLENT

Polish EXCELLENT

Symmetry EXCELLENT

Fluorescence NONE

Inscription(s) 757513925

Comments: IDEAL CUT ROUND BRILLIANT



December 31, 2025

IGI Report Number 757513925

ROUND BRILLIANT

NATURAL DIAMOND

5.19 - 5.23 X 3.26 MM

Carat Weight 0.55 CARAT

Color Grade H

Clarity Grade VVS 2

Cut Grade EXCELLENT

Polish EXCELLENT

Symmetry EXCELLENT

Fluorescence NONE

Inscription(s) 757513925

Comments: IDEAL CUT ROUND BRILLIANT



THIS DOCUMENT WAS PRODUCED WITH THE FOLLOWING SECURITY MEASURES: SPECIAL DOCUMENT PAPER, INK SCREENS, WATERMARK, BACKGROUND DESIGNS, HOLOGRAM AND OTHER SECURITY FEATURES NOT LISTED AND DO EXCEED DOCUMENT SECURITY INDUSTRY GUIDELINES.

For terms & conditions and to verify this report, please visit [www.igi.org](http://www.igi.org)