



# INTERNATIONAL GEMOLOGICAL INSTITUTE

## DIAMOND REPORT

December 31, 2025

IGI Report Number

757513904

Description

NATURAL DIAMOND

Shape and Cutting Style

ROUND BRILLIANT

Measurements

5.90 - 5.95 X 3.69 MM

## GRADING RESULTS

Carat Weight

0.80 CARAT

Color Grade

H

Clarity Grade

VVS 2

Cut Grade

EXCELLENT

## ADDITIONAL GRADING INFORMATION

Polish

EXCELLENT

Symmetry

EXCELLENT

Fluorescence

NONE

Identification Features

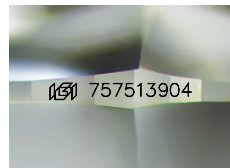
PINPOINT, FEATHER

Inscription(s)

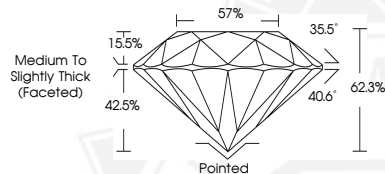
IGI 757513904

Comments: IDEAL CUT ROUND BRILLIANT

ELECTRONIC COPY



Sample Image Used



THIS DOCUMENT WAS PRODUCED WITH THE FOLLOWING SECURITY MEASURES: SPECIAL DOCUMENT PAPER, INK SCREENS, WATERMARK, BACKGROUND DESIGNS, HOLOGRAM AND OTHER SECURITY FEATURES NOT LISTED AND DO EXCEED DOCUMENT SECURITY INDUSTRY GUIDELINES.

For terms & conditions and to verify this report, please visit [www.igi.org](http://www.igi.org)



December 31, 2025

IGI Report Number 757513904

ROUND BRILLIANT

NATURAL DIAMOND

5.90 - 5.95 X 3.69 MM

Carat Weight 0.80 CARAT

Color Grade H

Clarity Grade VVS 2

Cut Grade EXCELLENT

Polish EXCELLENT

Symmetry EXCELLENT

Fluorescence NONE

Inscription(s) IGI 757513904

Comments: IDEAL CUT ROUND

BRILLIANT



December 31, 2025

IGI Report Number 757513904

ROUND BRILLIANT

NATURAL DIAMOND

5.90 - 5.95 X 3.69 MM

Carat Weight 0.80 CARAT

Color Grade H

Clarity Grade VVS 2

Cut Grade EXCELLENT

Polish EXCELLENT

Symmetry EXCELLENT

Fluorescence NONE

Inscription(s) IGI 757513904

Comments: IDEAL CUT ROUND

BRILLIANT