



# INTERNATIONAL GEMOLOGICAL INSTITUTE

## DIAMOND REPORT

December 31, 2025  
IGI Report Number **757513878**  
Description **NATURAL DIAMOND**  
Shape and Cutting Style **ROUND BRILLIANT**  
Measurements **5.12 - 5.15 X 3.15 MM**

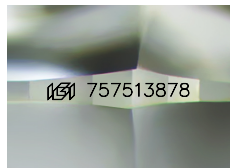
### GRADING RESULTS

Carat Weight **0.51 CARAT**  
Color Grade **G**  
Clarity Grade **VS 1**  
Cut Grade **EXCELLENT**

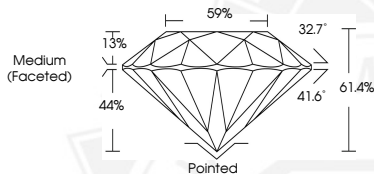
### ADDITIONAL GRADING INFORMATION

Polish **EXCELLENT**  
Symmetry **EXCELLENT**  
Fluorescence **NONE**  
Identification Features **CLOUD, FEATHER**  
Inscription(s) **(G) 757513878**

ELECTRONIC COPY



Sample Image Used



December 31, 2025  
IGI Report Number **757513878**  
**ROUND BRILLIANT**  
**NATURAL DIAMOND**  
**5.12 - 5.15 X 3.15 MM**  
Carat Weight **0.51 CARAT**  
Color Grade **G**  
Clarity Grade **VS 1**  
Cut Grade **EXCELLENT**  
Polish **EXCELLENT**  
Symmetry **EXCELLENT**  
Fluorescence **NONE**  
Inscription(s) **(G) 757513878**



December 31, 2025  
IGI Report Number **757513878**  
**ROUND BRILLIANT**  
**NATURAL DIAMOND**  
**5.12 - 5.15 X 3.15 MM**  
Carat Weight **0.51 CARAT**  
Color Grade **G**  
Clarity Grade **VS 1**  
Cut Grade **EXCELLENT**  
Polish **EXCELLENT**  
Symmetry **EXCELLENT**  
Fluorescence **NONE**  
Inscription(s) **(G) 757513878**



THIS DOCUMENT WAS PRODUCED WITH THE FOLLOWING SECURITY MEASURES: SPECIAL DOCUMENT PAPER, INK SCREENS, WATERMARK, BACKGROUND DESIGNS, HOLOGRAM AND OTHER SECURITY FEATURES NOT LISTED AND DO EXCEED DOCUMENT SECURITY INDUSTRY GUIDELINES.

For terms & conditions and to verify this report, please visit [www.igi.org](http://www.igi.org)