



# INTERNATIONAL GEMOLOGICAL INSTITUTE

## DIAMOND REPORT

December 26, 2025

IGI Report Number

757513531

Description

NATURAL DIAMOND

Shape and Cutting Style

ROUND BRILLIANT

Measurements

4.71 - 4.77 X 2.96 MM

### GRADING RESULTS

Carat Weight

0.41 CARAT

Color Grade

F

Clarity Grade

VVS 2

Cut Grade

EXCELLENT

### ADDITIONAL GRADING INFORMATION

Polish

EXCELLENT

Symmetry

EXCELLENT

Fluorescence

NONE

Identification Features

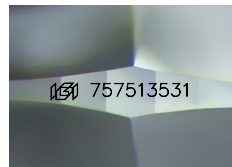
CLOUD, PINPOINT

Inscription(s)

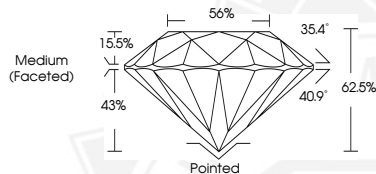
IGI 757513531

Comments: IDEAL CUT ROUND BRILLIANT

ELECTRONIC COPY



Sample Image Used



December 26, 2025

IGI Report Number 757513531

ROUND BRILLIANT

NATURAL DIAMOND

4.71 - 4.77 X 2.96 MM

Carat Weight 0.41 CARAT

Color Grade F

Clarity Grade VVS 2

Cut Grade EXCELLENT

Polish EXCELLENT

Symmetry EXCELLENT

Fluorescence NONE

Inscription(s) IGI 757513531

Comments: IDEAL CUT ROUND

BRILLIANT



December 26, 2025

IGI Report Number 757513531

ROUND BRILLIANT

NATURAL DIAMOND

4.71 - 4.77 X 2.96 MM

Carat Weight 0.41 CARAT

Color Grade F

Clarity Grade VVS 2

Cut Grade EXCELLENT

Polish EXCELLENT

Symmetry EXCELLENT

Fluorescence NONE

Inscription(s) IGI 757513531

Comments: IDEAL CUT ROUND

BRILLIANT



THIS DOCUMENT WAS PRODUCED WITH THE FOLLOWING SECURITY MEASURES: SPECIAL DOCUMENT PAPER, INK SCREENS, WATERMARK, BACKGROUND DESIGNS, HOLOGRAM AND OTHER SECURITY FEATURES NOT LISTED AND DO EXCEED DOCUMENT SECURITY INDUSTRY GUIDELINES.

For terms & conditions and to verify this report, please visit [www.igi.org](http://www.igi.org)