



# INTERNATIONAL GEMOLOGICAL INSTITUTE

## DIAMOND REPORT

December 27, 2025  
IGI Report Number  
Description  
Shape and Cutting Style  
Measurements

**757513489**  
**NATURAL DIAMOND**  
**ROUND BRILLIANT**  
**4.69 - 4.74 X 2.93 MM**

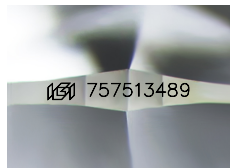
## GRADING RESULTS

Carat Weight **0.40 CARAT**  
Color Grade **I**  
Clarity Grade **VVS 1**  
Cut Grade **EXCELLENT**

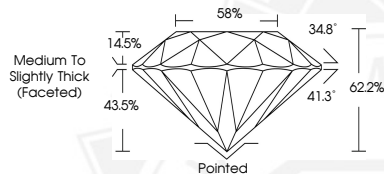
## ADDITIONAL GRADING INFORMATION

Polish **EXCELLENT**  
Symmetry **EXCELLENT**  
Fluorescence **NONE**  
Identification Features **FEATHER**  
Inscription(s) **IGI 757513489**  
Comments: IDEAL CUT ROUND BRILLIANT

ELECTRONIC COPY



Sample Image Used



December 27, 2025

IGI Report Number 757513489

ROUND BRILLIANT

NATURAL DIAMOND

4.69 - 4.74 X 2.93 MM

Carat Weight **0.40 CARAT**

Color Grade **I**

Clarity Grade **VVS 1**

Cut Grade **EXCELLENT**

Polish **EXCELLENT**

Symmetry **EXCELLENT**

Fluorescence **NONE**

Inscription(s) **IGI 757513489**

Comments: IDEAL CUT ROUND

BRILLIANT



December 27, 2025

IGI Report Number 757513489

ROUND BRILLIANT

NATURAL DIAMOND

4.69 - 4.74 X 2.93 MM

Carat Weight **0.40 CARAT**

Color Grade **I**

Clarity Grade **VVS 1**

Cut Grade **EXCELLENT**

Polish **EXCELLENT**

Symmetry **EXCELLENT**

Fluorescence **NONE**

Inscription(s) **IGI 757513489**

Comments: IDEAL CUT ROUND

BRILLIANT



THIS DOCUMENT WAS PRODUCED WITH THE FOLLOWING SECURITY MEASURES: SPECIAL DOCUMENT PAPER, INK SCREENS, WATERMARK, BACKGROUND DESIGNS, HOLOGRAM AND OTHER SECURITY FEATURES NOT LISTED AND DO EXCEED DOCUMENT SECURITY INDUSTRY GUIDELINES.

For terms & conditions and to verify this report, please visit [www.igi.org](http://www.igi.org)