



# INTERNATIONAL GEMOLOGICAL INSTITUTE

## DIAMOND REPORT

December 27, 2025

IGI Report Number

757513331

Description

NATURAL DIAMOND

Shape and Cutting Style

ROUND BRILLIANT

Measurements

5.22 - 5.26 X 3.23 MM

### GRADING RESULTS

Carat Weight

0.54 CARAT

Color Grade

G

Clarity Grade

VVS 2

Cut Grade

EXCELLENT

### ADDITIONAL GRADING INFORMATION

Polish

EXCELLENT

Symmetry

EXCELLENT

Fluorescence

NONE

Identification Features

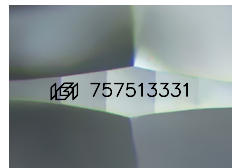
NEEDLE, PINPOINT

Inscription(s)

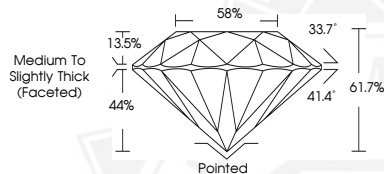
IGI 757513331

Comments: IDEAL CUT ROUND BRILLIANT

ELECTRONIC COPY



Sample Image Used



December 27, 2025

IGI Report Number 757513331

ROUND BRILLIANT

NATURAL DIAMOND

5.22 - 5.26 X 3.23 MM

Carat Weight 0.54 CARAT

Color Grade G

Clarity Grade VVS 2

Cut Grade EXCELLENT

Polish EXCELLENT

Symmetry EXCELLENT

Fluorescence NONE

Inscription(s) IGI 757513331

Comments: IDEAL CUT ROUND

BRILLIANT



December 27, 2025

IGI Report Number 757513331

ROUND BRILLIANT

NATURAL DIAMOND

5.22 - 5.26 X 3.23 MM

Carat Weight 0.54 CARAT

Color Grade G

Clarity Grade VVS 2

Cut Grade EXCELLENT

Polish EXCELLENT

Symmetry EXCELLENT

Fluorescence NONE

Inscription(s) IGI 757513331

Comments: IDEAL CUT ROUND

BRILLIANT



THIS DOCUMENT WAS PRODUCED WITH THE FOLLOWING SECURITY MEASURES: SPECIAL DOCUMENT PAPER, INK SCREENS, WATERMARK, BACKGROUND DESIGNS, HOLOGRAM AND OTHER SECURITY FEATURES NOT LISTED AND DO EXCEED DOCUMENT SECURITY INDUSTRY GUIDELINES.

For terms & conditions and to verify this report, please visit [www.igi.org](http://www.igi.org)