



**INTERNATIONAL
GEMOLOGICAL
INSTITUTE**

ELECTRONIC COPY



December 27, 2025

IGI Report Number 757513321

**ROUND BRILLIANT
NATURAL DIAMOND
4.31 - 4.35 X 2.64 MM**

Carat Weight **0.30 CARAT**
Color Grade **G**
Clarity Grade **VVS 1**
Cut Grade **EXCELLENT**
Polish **EXCELLENT**
Symmetry **EXCELLENT**
Fluorescence **NONE**
Inscription(s) **IGI 757513321**

DIAMOND REPORT

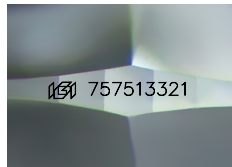
December 27, 2025
IGI Report Number **757513321**
Description **NATURAL DIAMOND**
Shape and Cutting Style **ROUND BRILLIANT**
Measurements **4.31 - 4.35 X 2.64 MM**

GRADING RESULTS

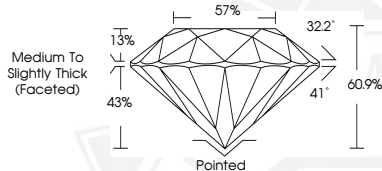
Carat Weight **0.30 CARAT**
Color Grade **G**
Clarity Grade **VVS 1**
Cut Grade **EXCELLENT**

ADDITIONAL GRADING INFORMATION

Polish **EXCELLENT**
Symmetry **EXCELLENT**
Fluorescence **NONE**
Identification Features **PINPOINT**
Inscription(s) **IGI 757513321**



Sample Image Used



December 27, 2025

IGI Report Number 757513321

**ROUND BRILLIANT
NATURAL DIAMOND
4.31 - 4.35 X 2.64 MM**

Carat Weight **0.30 CARAT**
Color Grade **G**
Clarity Grade **VVS 1**
Cut Grade **EXCELLENT**
Polish **EXCELLENT**
Symmetry **EXCELLENT**
Fluorescence **NONE**
Inscription(s) **IGI 757513321**



THIS DOCUMENT WAS PRODUCED WITH THE FOLLOWING SECURITY MEASURES: SPECIAL DOCUMENT PAPER, INK SCREENS, WATERMARK, BACKGROUND DESIGNS, HOLOGRAM AND OTHER SECURITY FEATURES NOT LISTED AND DO EXCEED DOCUMENT SECURITY INDUSTRY GUIDELINES.

For terms & conditions and to verify this report, please visit www.igi.org