



# INTERNATIONAL GEMOLOGICAL INSTITUTE

## DIAMOND REPORT

December 23, 2025

IGI Report Number

757512981

Description

NATURAL DIAMOND

Shape and Cutting Style

ROUND BRILLIANT

Measurements

5.09 - 5.14 X 3.12 MM

### GRADING RESULTS

Carat Weight

0.50 CARAT

Color Grade

F

Clarity Grade

VS 2

Cut Grade

EXCELLENT

### ADDITIONAL GRADING INFORMATION

Polish

EXCELLENT

Symmetry

EXCELLENT

Fluorescence

VERY SLIGHT

Identification Features

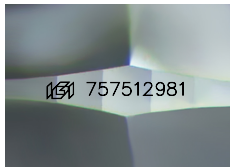
CLOUD, CRYSTAL

Inscription(s)

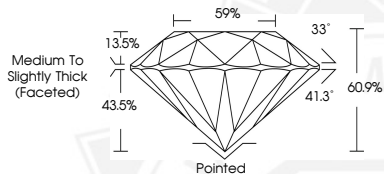
IGI 757512981

Comments: IDEAL CUT ROUND BRILLIANT

ELECTRONIC COPY



Sample Image Used



THIS DOCUMENT WAS PRODUCED WITH THE FOLLOWING SECURITY MEASURES: SPECIAL DOCUMENT PAPER, INK SCREENS, WATERMARK, BACKGROUND DESIGNS, HOLOGRAM AND OTHER SECURITY FEATURES NOT LISTED AND DO EXCEED DOCUMENT SECURITY INDUSTRY GUIDELINES.

For terms & conditions and to verify this report, please visit [www.igi.org](http://www.igi.org)



December 23, 2025

IGI Report Number 757512981

ROUND BRILLIANT

NATURAL DIAMOND

5.09 - 5.14 X 3.12 MM

Carat Weight 0.50 CARAT

Color Grade F

Clarity Grade VS 2

Cut Grade EXCELLENT

Polish EXCELLENT

Symmetry EXCELLENT

Fluorescence VERY SLIGHT

Inscription(s) IGI 757512981

Comments: IDEAL CUT ROUND

BRILLIANT



December 23, 2025

IGI Report Number 757512981

ROUND BRILLIANT

NATURAL DIAMOND

5.09 - 5.14 X 3.12 MM

Carat Weight 0.50 CARAT

Color Grade F

Clarity Grade VS 2

Cut Grade EXCELLENT

Polish EXCELLENT

Symmetry EXCELLENT

Fluorescence VERY SLIGHT

Inscription(s) IGI 757512981

Comments: IDEAL CUT ROUND

BRILLIANT