



DIAMOND REPORT

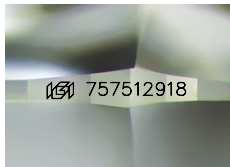
December 23, 2025
 IGI Report Number **757512918**
 Description **NATURAL DIAMOND**
 Shape and Cutting Style **ROUND BRILLIANT**
 Measurements **5.09 - 5.12 X 3.19 MM**

GRADING RESULTS

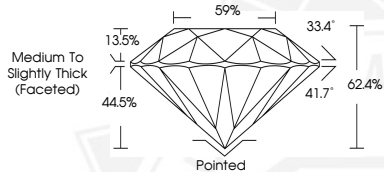
Carat Weight **0.51 CARAT**
 Color Grade **E**
 Clarity Grade **VVS 1**
 Cut Grade **EXCELLENT**

ADDITIONAL GRADING INFORMATION

Polish **EXCELLENT**
 Symmetry **EXCELLENT**
 Fluorescence **VERY SLIGHT**
 Identification Features **PINPOINT**
 Inscription(s) **IGI 757512918**



Sample Image Used



December 23, 2025
 IGI Report Number **757512918**
 ROUND BRILLIANT
 NATURAL DIAMOND
 5.09 - 5.12 X 3.19 MM
 Carat Weight **0.51 CARAT**
 Color Grade **E**
 Clarity Grade **VVS 1**
 Cut Grade **EXCELLENT**
 Polish **EXCELLENT**
 Symmetry **EXCELLENT**
 Fluorescence **VERY SLIGHT**
 Inscription(s) **IGI 757512918**



December 23, 2025
 IGI Report Number **757512918**
 ROUND BRILLIANT
 NATURAL DIAMOND
 5.09 - 5.12 X 3.19 MM
 Carat Weight **0.51 CARAT**
 Color Grade **E**
 Clarity Grade **VVS 1**
 Cut Grade **EXCELLENT**
 Polish **EXCELLENT**
 Symmetry **EXCELLENT**
 Fluorescence **VERY SLIGHT**
 Inscription(s) **IGI 757512918**



THIS DOCUMENT WAS PRODUCED WITH THE FOLLOWING SECURITY MEASURES: SPECIAL DOCUMENT PAPER, INK SCREENS, WATERMARK, BACKGROUND DESIGNS, HOLOGRAM AND OTHER SECURITY FEATURES NOT LISTED AND DO EXCEED DOCUMENT SECURITY INDUSTRY GUIDELINES.