



INTERNATIONAL GEMOLOGICAL INSTITUTE

DIAMOND REPORT

December 23, 2025
IGI Report Number **757512790**
Description **NATURAL DIAMOND**
Shape and Cutting Style **SQUARE CUSHION MODIFIED BRILLIANT**
Measurements **5.31 X 5.30 X 3.55 MM**

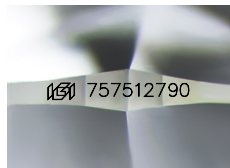
GRADING RESULTS

Carat Weight **0.84 CARAT**
Color Grade **H**
Clarity Grade **VVS 2**
Cut Grade **VERY GOOD**

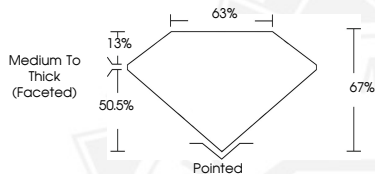
ADDITIONAL GRADING INFORMATION

Polish **EXCELLENT**
Symmetry **EXCELLENT**
Fluorescence **NONE**
Identification Features **PINPOINT**
Inscription(s) **(IGI) 757512790**

ELECTRONIC COPY



Sample Image Used



December 23, 2025

IGI Report Number **757512790**
**SQUARE CUSHION MODIFIED
BRILLIANT**

NATURAL DIAMOND
5.31 X 5.30 X 3.55 MM

Carat Weight **0.84 CARAT**
Color Grade **H**
Clarity Grade **VVS 2**
Cut Grade **VERY GOOD**
Polish **EXCELLENT**
Symmetry **EXCELLENT**
Fluorescence **NONE**
Inscription(s) **(IGI) 757512790**



December 23, 2025

IGI Report Number **757512790**
**SQUARE CUSHION MODIFIED
BRILLIANT**

NATURAL DIAMOND
5.31 X 5.30 X 3.55 MM

Carat Weight **0.84 CARAT**
Color Grade **H**
Clarity Grade **VVS 2**
Cut Grade **VERY GOOD**
Polish **EXCELLENT**
Symmetry **EXCELLENT**
Fluorescence **NONE**
Inscription(s) **(IGI) 757512790**



THIS DOCUMENT WAS PRODUCED WITH THE FOLLOWING SECURITY MEASURES: SPECIAL DOCUMENT PAPER, INK SCREENS, WATERMARK, BACKGROUND DESIGNS, HOLOGRAM AND OTHER SECURITY FEATURES NOT LISTED AND DO EXCEED DOCUMENT SECURITY INDUSTRY GUIDELINES.

For terms & conditions and to verify this report, please visit www.igi.org