



# INTERNATIONAL GEMOLOGICAL INSTITUTE

## DIAMOND REPORT

December 23, 2025  
IGI Report Number **757512759**  
Description **NATURAL DIAMOND**  
Shape and Cutting Style **EMERALD CUT**  
Measurements **6.41 X 4.19 X 2.81 MM**

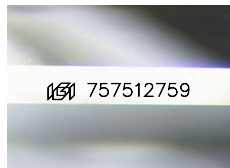
### GRADING RESULTS

Carat Weight **0.73 CARAT**  
Color Grade **G**  
Clarity Grade **INTERNALLY FLAWLESS**  
Cut Grade **VERY GOOD**

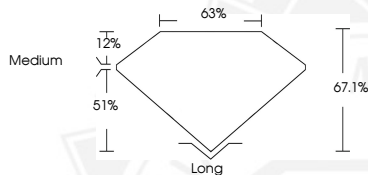
### ADDITIONAL GRADING INFORMATION

Polish **EXCELLENT**  
Symmetry **EXCELLENT**  
Fluorescence **NONE**  
Inscription(s) **IGI 757512759**

ELECTRONIC COPY



Sample Image Used



THIS DOCUMENT WAS PRODUCED WITH THE FOLLOWING SECURITY MEASURES: SPECIAL DOCUMENT PAPER, INK SCREENS, WATERMARK, BACKGROUND DESIGNS, HOLOGRAM AND OTHER SECURITY FEATURES NOT LISTED AND DO EXCEED DOCUMENT SECURITY INDUSTRY GUIDELINES.

For terms & conditions and to verify this report, please visit [www.igi.org](http://www.igi.org)



December 23, 2025

IGI Report Number **757512759**

**EMERALD CUT**

**NATURAL DIAMOND**

**6.41 X 4.19 X 2.81 MM**

Carat Weight **0.73 CARAT**

Color Grade **G**

Clarity Grade **I.F.**

Cut Grade **VERY GOOD**

Polish **EXCELLENT**

Symmetry **EXCELLENT**

Fluorescence **NONE**

Inscription(s) **IGI 757512759**



December 23, 2025

IGI Report Number **757512759**

**EMERALD CUT**

**NATURAL DIAMOND**

**6.41 X 4.19 X 2.81 MM**

Carat Weight **0.73 CARAT**

Color Grade **G**

Clarity Grade **I.F.**

Cut Grade **VERY GOOD**

Polish **EXCELLENT**

Symmetry **EXCELLENT**

Fluorescence **NONE**

Inscription(s) **IGI 757512759**