



# INTERNATIONAL GEMOLOGICAL INSTITUTE

## DIAMOND REPORT

December 29, 2025  
IGI Report Number **757511458**  
Description **NATURAL DIAMOND**  
Shape and Cutting Style **ROUND BRILLIANT**  
Measurements **4.70 - 4.73 X 2.89 MM**

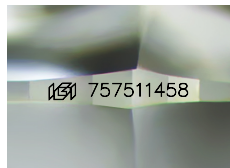
### GRADING RESULTS

Carat Weight **0.40 CARAT**  
Color Grade **E**  
Clarity Grade **VS 2**  
Cut Grade **EXCELLENT**

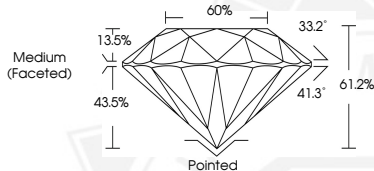
### ADDITIONAL GRADING INFORMATION

Polish **EXCELLENT**  
Symmetry **EXCELLENT**  
Fluorescence **NONE**  
Identification Features **CRYSTAL CLOUD**  
Inscription(s) **IGI 757511458**  
Comments: IDEAL CUT ROUND BRILLIANT

ELECTRONIC COPY



Sample Image Used



THIS DOCUMENT WAS PRODUCED WITH THE FOLLOWING SECURITY MEASURES: SPECIAL DOCUMENT PAPER, INK SCREENS, WATERMARK, BACKGROUND DESIGNS, HOLOGRAM AND OTHER SECURITY FEATURES NOT LISTED AND DO EXCEED DOCUMENT SECURITY INDUSTRY GUIDELINES.

For terms & conditions and to verify this report, please visit [www.igi.org](http://www.igi.org)



December 29, 2025

IGI Report Number **757511458**

**ROUND BRILLIANT**

**NATURAL DIAMOND**

**4.70 - 4.73 X 2.89 MM**

Carat Weight **0.40 CARAT**

Color Grade **E**

Clarity Grade **VS 2**

Cut Grade **EXCELLENT**

Polish **EXCELLENT**

Symmetry **EXCELLENT**

Fluorescence **NONE**

Inscription(s) **IGI 757511458**

Comments: IDEAL CUT ROUND

**BRILLIANT**



December 29, 2025

IGI Report Number **757511458**

**ROUND BRILLIANT**

**NATURAL DIAMOND**

**4.70 - 4.73 X 2.89 MM**

Carat Weight **0.40 CARAT**

Color Grade **E**

Clarity Grade **VS 2**

Cut Grade **EXCELLENT**

Polish **EXCELLENT**

Symmetry **EXCELLENT**

Fluorescence **NONE**

Inscription(s) **IGI 757511458**

Comments: IDEAL CUT ROUND

**BRILLIANT**