



December 27, 2025

IGI Report Number 757511103

**ROUND BRILLIANT  
NATURAL DIAMOND  
4.29 - 4.32 X 2.65 MM**

Carat Weight **0.30 CARAT**  
Color Grade **G**  
Clarity Grade **I.F.**  
Cut Grade **EXCELLENT**  
Polish **EXCELLENT**  
Symmetry **EXCELLENT**  
Fluorescence **NONE**  
Inscription(s) **IGI 757511103**

**DIAMOND REPORT**

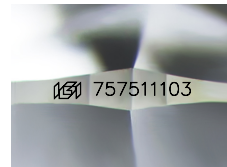
December 27, 2025  
IGI Report Number **757511103**  
Description **NATURAL DIAMOND**  
Shape and Cutting Style **ROUND BRILLIANT**  
Measurements **4.29 - 4.32 X 2.65 MM**

**GRADING RESULTS**

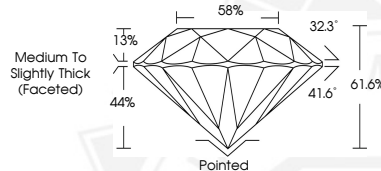
Carat Weight **0.30 CARAT**  
Color Grade **G**  
Clarity Grade **INTERNALLY FLAWLESS**  
Cut Grade **EXCELLENT**

**ADDITIONAL GRADING INFORMATION**

Polish **EXCELLENT**  
Symmetry **EXCELLENT**  
Fluorescence **NONE**  
Inscription(s) **IGI 757511103**



Sample Image Used



December 27, 2025

IGI Report Number 757511103

**ROUND BRILLIANT  
NATURAL DIAMOND  
4.29 - 4.32 X 2.65 MM**

Carat Weight **0.30 CARAT**  
Color Grade **G**  
Clarity Grade **I.F.**  
Cut Grade **EXCELLENT**  
Polish **EXCELLENT**  
Symmetry **EXCELLENT**  
Fluorescence **NONE**  
Inscription(s) **IGI 757511103**



THIS DOCUMENT WAS PRODUCED WITH THE FOLLOWING SECURITY MEASURES: SPECIAL DOCUMENT PAPER, INK SCREENS, WATERMARK, BACKGROUND DESIGNS, HOLOGRAM AND OTHER SECURITY FEATURES NOT LISTED AND DO EXCEED DOCUMENT SECURITY INDUSTRY GUIDELINES.