



December 27, 2025

IGI Report Number 757511056

**ROUND BRILLIANT
NATURAL DIAMOND
4.36 - 4.40 X 2.64 MM**

Carat Weight **0.31 CARAT**
Color Grade **G**
Clarity Grade **I.F.**
Cut Grade **EXCELLENT**
Polish **EXCELLENT**
Symmetry **EXCELLENT**
Fluorescence **NONE**
Inscription(s) **IGI 757511056**

DIAMOND REPORT

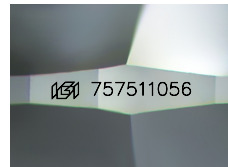
December 27, 2025
IGI Report Number **757511056**
Description **NATURAL DIAMOND**
Shape and Cutting Style **ROUND BRILLIANT**
Measurements **4.36 - 4.40 X 2.64 MM**

GRADING RESULTS

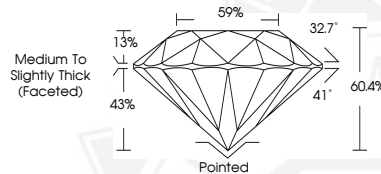
Carat Weight **0.31 CARAT**
Color Grade **G**
Clarity Grade **INTERNALLY FLAWLESS**
Cut Grade **EXCELLENT**

ADDITIONAL GRADING INFORMATION

Polish **EXCELLENT**
Symmetry **EXCELLENT**
Fluorescence **NONE**
Inscription(s) **IGI 757511056**



Sample Image Used



December 27, 2025

IGI Report Number 757511056

**ROUND BRILLIANT
NATURAL DIAMOND
4.36 - 4.40 X 2.64 MM**

Carat Weight **0.31 CARAT**
Color Grade **G**
Clarity Grade **I.F.**
Cut Grade **EXCELLENT**
Polish **EXCELLENT**
Symmetry **EXCELLENT**
Fluorescence **NONE**
Inscription(s) **IGI 757511056**



THIS DOCUMENT WAS PRODUCED WITH THE FOLLOWING SECURITY MEASURES: SPECIAL DOCUMENT PAPER, INK SCREENS, WATERMARK, BACKGROUND DESIGNS, HOLOGRAM AND OTHER SECURITY FEATURES NOT LISTED AND DO EXCEED DOCUMENT SECURITY INDUSTRY GUIDELINES.