



December 24, 2025

IGI Report Number 757510546

**ROUND BRILLIANT
NATURAL DIAMOND
4.26 - 4.30 X 2.65 MM**

Carat Weight **0.30 CARAT**
Color Grade **G**
Clarity Grade **I.F.**
Cut Grade **EXCELLENT**
Polish **EXCELLENT**
Symmetry **EXCELLENT**
Fluorescence **NONE**
Inscription(s) **IGI 757510546**

DIAMOND REPORT

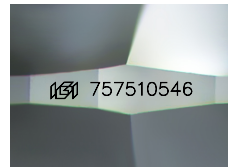
December 24, 2025
IGI Report Number **757510546**
Description **NATURAL DIAMOND**
Shape and Cutting Style **ROUND BRILLIANT**
Measurements **4.26 - 4.30 X 2.65 MM**

GRADING RESULTS

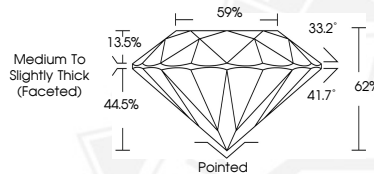
Carat Weight **0.30 CARAT**
Color Grade **G**
Clarity Grade **INTERNALLY FLAWLESS**
Cut Grade **EXCELLENT**

ADDITIONAL GRADING INFORMATION

Polish **EXCELLENT**
Symmetry **EXCELLENT**
Fluorescence **NONE**
Inscription(s) **IGI 757510546**



Sample Image Used



December 24, 2025

IGI Report Number 757510546

**ROUND BRILLIANT
NATURAL DIAMOND
4.26 - 4.30 X 2.65 MM**

Carat Weight **0.30 CARAT**
Color Grade **G**
Clarity Grade **I.F.**
Cut Grade **EXCELLENT**
Polish **EXCELLENT**
Symmetry **EXCELLENT**
Fluorescence **NONE**
Inscription(s) **IGI 757510546**



THIS DOCUMENT WAS PRODUCED WITH THE FOLLOWING SECURITY MEASURES: SPECIAL DOCUMENT PAPER, INK SCREENS, WATERMARK, BACKGROUND DESIGNS, HOLOGRAM AND OTHER SECURITY FEATURES NOT LISTED AND DO EXCEED DOCUMENT SECURITY INDUSTRY GUIDELINES.