



# INTERNATIONAL GEMOLOGICAL INSTITUTE

## DIAMOND REPORT

December 24, 2025

IGI Report Number

Description

Shape and Cutting Style

Measurements

757510276

NATURAL DIAMOND

ROUND BRILLIANT

5.17 - 5.20 X 3.18 MM

## GRADING RESULTS

Carat Weight

Color Grade

Clarity Grade

Cut Grade

0.53 CARAT

G

VVS 1

EXCELLENT

## ADDITIONAL GRADING INFORMATION

Polish

Symmetry

Fluorescence

Identification Features

Inscription(s)

Comments: IDEAL CUT ROUND BRILLIANT

EXCELLENT

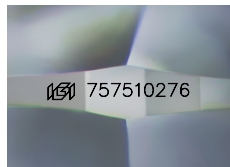
EXCELLENT

NONE

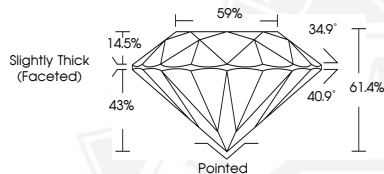
PINPOINT

757510276

ELECTRONIC COPY



Sample Image Used



THIS DOCUMENT WAS PRODUCED WITH THE FOLLOWING SECURITY MEASURES: SPECIAL DOCUMENT PAPER, INK SCREENS, WATERMARK, BACKGROUND DESIGNS, HOLOGRAM AND OTHER SECURITY FEATURES NOT LISTED AND DO EXCEED DOCUMENT SECURITY INDUSTRY GUIDELINES.

For terms & conditions and to verify this report, please visit [www.igi.org](http://www.igi.org)



December 24, 2025

IGI Report Number 757510276

ROUND BRILLIANT

NATURAL DIAMOND

5.17 - 5.20 X 3.18 MM

Carat Weight 0.53 CARAT

Color Grade G

Clarity Grade VVS 1

Cut Grade EXCELLENT

Polish EXCELLENT

Symmetry EXCELLENT

Fluorescence NONE

Inscription(s) 757510276

Comments: IDEAL CUT ROUND

BRILLIANT



December 24, 2025

IGI Report Number 757510276

ROUND BRILLIANT

NATURAL DIAMOND

5.17 - 5.20 X 3.18 MM

Carat Weight 0.53 CARAT

Color Grade G

Clarity Grade VVS 1

Cut Grade EXCELLENT

Polish EXCELLENT

Symmetry EXCELLENT

Fluorescence NONE

Inscription(s) 757510276

Comments: IDEAL CUT ROUND

BRILLIANT