



# INTERNATIONAL GEMOLOGICAL INSTITUTE

## DIAMOND REPORT

December 24, 2025

IGI Report Number

757510151

Description

NATURAL DIAMOND

Shape and Cutting Style

ROUND BRILLIANT

Measurements

4.71 - 4.72 X 2.94 MM

## GRADING RESULTS

Carat Weight

0.40 CARAT

Color Grade

G

Clarity Grade

INTERNALLY FLAWLESS

Cut Grade

EXCELLENT

## ADDITIONAL GRADING INFORMATION

Polish

EXCELLENT

Symmetry

EXCELLENT

Fluorescence

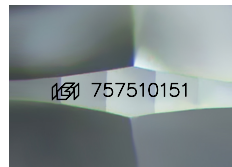
NONE

Inscription(s)

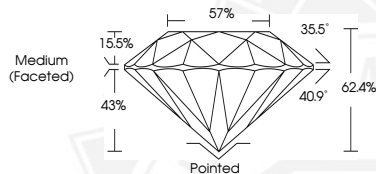
IGI 757510151

Comments: IDEAL CUT ROUND BRILLIANT

ELECTRONIC COPY



Sample Image Used



December 24, 2025

IGI Report Number 757510151

ROUND BRILLIANT

NATURAL DIAMOND

4.71 - 4.72 X 2.94 MM

Carat Weight 0.40 CARAT

Color Grade G

Clarity Grade I.F.

Cut Grade EXCELLENT

Polish EXCELLENT

Symmetry EXCELLENT

Fluorescence NONE

Inscription(s) IGI 757510151

Comments: IDEAL CUT ROUND

BRILLIANT



December 24, 2025

IGI Report Number 757510151

ROUND BRILLIANT

NATURAL DIAMOND

4.71 - 4.72 X 2.94 MM

Carat Weight 0.40 CARAT

Color Grade G

Clarity Grade I.F.

Cut Grade EXCELLENT

Polish EXCELLENT

Symmetry EXCELLENT

Fluorescence NONE

Inscription(s) IGI 757510151

Comments: IDEAL CUT ROUND

BRILLIANT



THIS DOCUMENT WAS PRODUCED WITH THE FOLLOWING SECURITY MEASURES: SPECIAL DOCUMENT PAPER, INK SCREENS, WATERMARK, BACKGROUND DESIGNS, HOLOGRAM AND OTHER SECURITY FEATURES NOT LISTED AND DO EXCEED DOCUMENT SECURITY INDUSTRY GUIDELINES.

For terms & conditions and to verify this report, please visit [www.igi.org](http://www.igi.org)