



INTERNATIONAL GEMOLOGICAL INSTITUTE

DIAMOND REPORT

December 26, 2025

IGI Report Number

757509959

Description

NATURAL DIAMOND

Shape and Cutting Style

ROUND BRILLIANT

Measurements

5.14 - 5.17 X 3.21 MM

GRADING RESULTS

Carat Weight

0.53 CARAT

Color Grade

F

Clarity Grade

VVS 2

Cut Grade

EXCELLENT

ADDITIONAL GRADING INFORMATION

Polish

EXCELLENT

Symmetry

EXCELLENT

Fluorescence

NONE

Identification Features

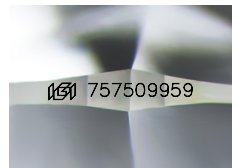
PINPOINT, CLOUD

Inscription(s)

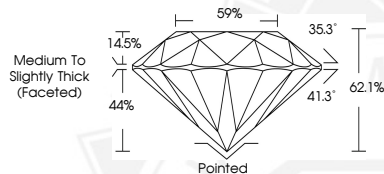
IGI 757509959

Comments: IDEAL CUT ROUND BRILLIANT

ELECTRONIC COPY



Sample Image Used



THIS DOCUMENT WAS PRODUCED WITH THE FOLLOWING SECURITY MEASURES: SPECIAL DOCUMENT PAPER, INK SCREENS, WATERMARK, BACKGROUND DESIGNS, HOLOGRAM AND OTHER SECURITY FEATURES NOT LISTED AND DO EXCEED DOCUMENT SECURITY INDUSTRY GUIDELINES.

For terms & conditions and to verify this report, please visit www.igi.org



December 26, 2025

IGI Report Number 757509959

ROUND BRILLIANT

NATURAL DIAMOND

5.14 - 5.17 X 3.21 MM

Carat Weight 0.53 CARAT

Color Grade F

Clarity Grade VVS 2

Cut Grade EXCELLENT

Polish EXCELLENT

Symmetry EXCELLENT

Fluorescence NONE

Inscription(s) IGI 757509959

Comments: IDEAL CUT ROUND

BRILLIANT



December 26, 2025

IGI Report Number 757509959

ROUND BRILLIANT

NATURAL DIAMOND

5.14 - 5.17 X 3.21 MM

Carat Weight 0.53 CARAT

Color Grade F

Clarity Grade VVS 2

Cut Grade EXCELLENT

Polish EXCELLENT

Symmetry EXCELLENT

Fluorescence NONE

Inscription(s) IGI 757509959

Comments: IDEAL CUT ROUND

BRILLIANT