



# INTERNATIONAL GEMOLOGICAL INSTITUTE

## DIAMOND REPORT

December 24, 2025

IGI Report Number

757509534

Description

NATURAL DIAMOND

Shape and Cutting Style

ROUND BRILLIANT

Measurements

4.95 - 4.97 X 3.10 MM

### GRADING RESULTS

Carat Weight

0.47 CARAT

Color Grade

H

Clarity Grade

VVS 2

Cut Grade

EXCELLENT

### ADDITIONAL GRADING INFORMATION

Polish

EXCELLENT

Symmetry

EXCELLENT

Fluorescence

NONE

Identification Features

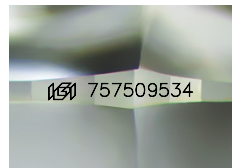
CLOUD

Inscription(s)

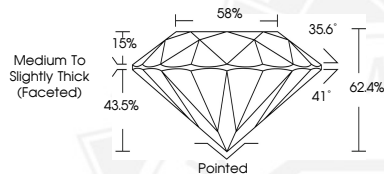
IGI 757509534

Comments: IDEAL CUT ROUND BRILLIANT

ELECTRONIC COPY



Sample Image Used



THIS DOCUMENT WAS PRODUCED WITH THE FOLLOWING SECURITY MEASURES: SPECIAL DOCUMENT PAPER, INK SCREENS, WATERMARK, BACKGROUND DESIGNS, HOLOGRAM AND OTHER SECURITY FEATURES NOT LISTED AND DO EXCEED DOCUMENT SECURITY INDUSTRY GUIDELINES.

For terms & conditions and to verify this report, please visit [www.igi.org](http://www.igi.org)



December 24, 2025

IGI Report Number 757509534

ROUND BRILLIANT

NATURAL DIAMOND

4.95 - 4.97 X 3.10 MM

Carat Weight 0.47 CARAT

Color Grade H

Clarity Grade VVS 2

Cut Grade EXCELLENT

Polish EXCELLENT

Symmetry EXCELLENT

Fluorescence NONE

Inscription(s) IGI 757509534

Comments: IDEAL CUT ROUND

BRILLIANT



December 24, 2025

IGI Report Number 757509534

ROUND BRILLIANT

NATURAL DIAMOND

4.95 - 4.97 X 3.10 MM

Carat Weight 0.47 CARAT

Color Grade H

Clarity Grade VVS 2

Cut Grade EXCELLENT

Polish EXCELLENT

Symmetry EXCELLENT

Fluorescence NONE

Inscription(s) IGI 757509534

Comments: IDEAL CUT ROUND

BRILLIANT