



INTERNATIONAL GEMOLOGICAL INSTITUTE

DIAMOND REPORT

January 9, 2026

IGI Report Number

756599790

Description

NATURAL DIAMOND

Shape and Cutting Style

ROUND BRILLIANT

Measurements

5.08 - 5.12 X 3.19 MM

GRADING RESULTS

Carat Weight

0.51 CARAT

Color Grade

H

Clarity Grade

VS 2

Cut Grade

EXCELLENT

ADDITIONAL GRADING INFORMATION

Polish

EXCELLENT

Symmetry

EXCELLENT

Fluorescence

NONE

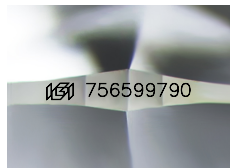
Identification Features

CRYSTAL CLOUD

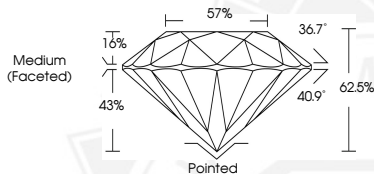
Inscription(s)

IGI 756599790

ELECTRONIC COPY



Sample Image Used



THIS DOCUMENT WAS PRODUCED WITH THE FOLLOWING SECURITY MEASURES: SPECIAL DOCUMENT PAPER, INK SCREENS, WATERMARK, BACKGROUND DESIGNS, HOLOGRAM AND OTHER SECURITY FEATURES NOT LISTED AND DO EXCEED DOCUMENT SECURITY INDUSTRY GUIDELINES.

For terms & conditions and to verify this report, please visit www.igi.org



January 9, 2026

IGI Report Number 756599790

ROUND BRILLIANT

NATURAL DIAMOND

5.08 - 5.12 X 3.19 MM

Carat Weight 0.51 CARAT

Color Grade H

Clarity Grade VS 2

Cut Grade EXCELLENT

Polish EXCELLENT

Symmetry EXCELLENT

Fluorescence NONE

Inscription(s) IGI 756599790



January 9, 2026

IGI Report Number 756599790

ROUND BRILLIANT

NATURAL DIAMOND

5.08 - 5.12 X 3.19 MM

Carat Weight 0.51 CARAT

Color Grade H

Clarity Grade VS 2

Cut Grade EXCELLENT

Polish EXCELLENT

Symmetry EXCELLENT

Fluorescence NONE

Inscription(s) IGI 756599790