



# INTERNATIONAL GEMOLOGICAL INSTITUTE

ELECTRONIC COPY

## DIAMOND REPORT

January 2, 2026

IGI Report Number

756599546

Description

NATURAL DIAMOND

Shape and Cutting Style

ROUND BRILLIANT

Measurements

5.23 - 5.27 X 3.24 MM

## GRADING RESULTS

Carat Weight

0.55 CARAT

Color Grade

G

Clarity Grade

VS 2

Cut Grade

EXCELLENT

## ADDITIONAL GRADING INFORMATION

Polish

EXCELLENT

Symmetry

EXCELLENT

Fluorescence

NONE

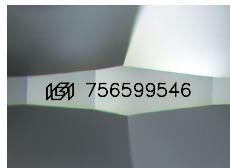
Identification Features

CLOUD, FEATHER

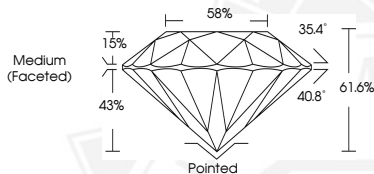
Inscription(s)

IGI 756599546

Comments: IDEAL CUT ROUND BRILLIANT



Sample Image Used



THIS DOCUMENT WAS PRODUCED WITH THE FOLLOWING SECURITY MEASURES: SPECIAL DOCUMENT PAPER, INK SCREENS, WATERMARK, BACKGROUND DESIGNS, HOLOGRAM AND OTHER SECURITY FEATURES NOT LISTED AND DO EXCEED DOCUMENT SECURITY INDUSTRY GUIDELINES.

For terms & conditions and to verify this report, please visit [www.igi.org](http://www.igi.org)



January 2, 2026

IGI Report Number 756599546

ROUND BRILLIANT

NATURAL DIAMOND

5.23 - 5.27 X 3.24 MM

Carat Weight 0.55 CARAT

Color Grade G

Clarity Grade VS 2

Cut Grade EXCELLENT

Polish EXCELLENT

Symmetry EXCELLENT

Fluorescence NONE

Inscription(s) IGI 756599546

Comments: IDEAL CUT ROUND

BRILLIANT



January 2, 2026

IGI Report Number 756599546

ROUND BRILLIANT

NATURAL DIAMOND

5.23 - 5.27 X 3.24 MM

Carat Weight 0.55 CARAT

Color Grade G

Clarity Grade VS 2

Cut Grade EXCELLENT

Polish EXCELLENT

Symmetry EXCELLENT

Fluorescence NONE

Inscription(s) IGI 756599546

Comments: IDEAL CUT ROUND

BRILLIANT