



# INTERNATIONAL GEMOLOGICAL INSTITUTE

ELECTRONIC COPY

## DIAMOND REPORT

January 2, 2026

IGI Report Number

756566051

Description

NATURAL DIAMOND

Shape and Cutting Style

ROUND BRILLIANT

Measurements

3.84 - 3.87 X 2.42 MM

### GRADING RESULTS

Carat Weight

0.22 CARAT

Color Grade

G

Clarity Grade

VVS 1

Cut Grade

EXCELLENT

### ADDITIONAL GRADING INFORMATION

Polish

EXCELLENT

Symmetry

EXCELLENT

Fluorescence

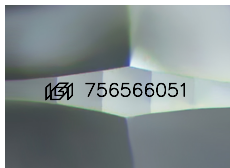
NONE

Identification Features

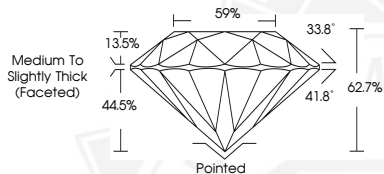
PINPOINT

Inscription(s)

756566051



Sample Image Used



January 2, 2026

IGI Report Number 756566051

ROUND BRILLIANT

NATURAL DIAMOND

3.84 - 3.87 X 2.42 MM

Carat Weight 0.22 CARAT

Color Grade G

Clarity Grade VVS 1

Cut Grade EXCELLENT

Polish EXCELLENT

Symmetry EXCELLENT

Fluorescence NONE

Inscription(s) 756566051



January 2, 2026

IGI Report Number 756566051

ROUND BRILLIANT

NATURAL DIAMOND

3.84 - 3.87 X 2.42 MM

Carat Weight 0.22 CARAT

Color Grade G

Clarity Grade VVS 1

Cut Grade EXCELLENT

Polish EXCELLENT

Symmetry EXCELLENT

Fluorescence NONE

Inscription(s) 756566051



THIS DOCUMENT WAS PRODUCED WITH THE FOLLOWING SECURITY MEASURES: SPECIAL DOCUMENT PAPER, INK SCREENS, WATERMARK, BACKGROUND DESIGNS, HOLOGRAM AND OTHER SECURITY FEATURES NOT LISTED AND DO EXCEED DOCUMENT SECURITY INDUSTRY GUIDELINES.

For terms & conditions and to verify this report, please visit [www.igi.org](http://www.igi.org)