



December 19, 2025

IGI Report Number 756565345

**ROUND BRILLIANT
NATURAL DIAMOND**
3.97 - 4.01 X 2.45 MM

Carat Weight 0.24 CARAT
Color Grade G
Clarity Grade VVS 1
Cut Grade EXCELLENT
Polish EXCELLENT
Symmetry EXCELLENT
Fluorescence VERY SLIGHT
Inscription(s) IGI 756565345

DIAMOND REPORT

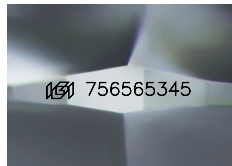
December 19, 2025
IGI Report Number 756565345
Description NATURAL DIAMOND
Shape and Cutting Style ROUND BRILLIANT
Measurements 3.97 - 4.01 X 2.45 MM

GRADING RESULTS

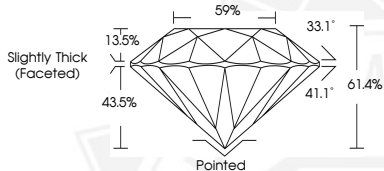
Carat Weight 0.24 CARAT
Color Grade G
Clarity Grade VVS 1
Cut Grade EXCELLENT

ADDITIONAL GRADING INFORMATION

Polish EXCELLENT
Symmetry EXCELLENT
Fluorescence VERY SLIGHT
Identification Features CLOUD, PINPOINT
Inscription(s) IGI 756565345



Sample Image Used



December 19, 2025

IGI Report Number 756565345

**ROUND BRILLIANT
NATURAL DIAMOND**
3.97 - 4.01 X 2.45 MM

Carat Weight 0.24 CARAT
Color Grade G
Clarity Grade VVS 1
Cut Grade EXCELLENT
Polish EXCELLENT
Symmetry EXCELLENT
Fluorescence VERY SLIGHT
Inscription(s) IGI 756565345



THIS DOCUMENT WAS PRODUCED WITH THE FOLLOWING SECURITY MEASURES: SPECIAL DOCUMENT PAPER, INK SCREENS, WATERMARK, BACKGROUND DESIGNS, HOLOGRAM AND OTHER SECURITY FEATURES NOT LISTED AND DO EXCEED DOCUMENT SECURITY INDUSTRY GUIDELINES.