



December 13, 2025

IGI Report Number **756565159**

**ROUND BRILLIANT
NATURAL DIAMOND
3.97 - 4.00 X 2.43 MM**

Carat Weight **0.23 CARAT**
Color Grade **F**
Clarity Grade **VVS 1**
Cut Grade **EXCELLENT**
Polish **EXCELLENT**
Symmetry **EXCELLENT**
Fluorescence **NONE**
Inscription(s) **IGI 756565159**

DIAMOND REPORT

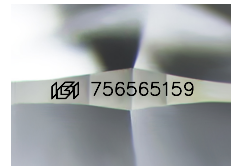
December 13, 2025
IGI Report Number **756565159**
Description **NATURAL DIAMOND**
Shape and Cutting Style **ROUND BRILLIANT**
Measurements **3.97 - 4.00 X 2.43 MM**

GRADING RESULTS

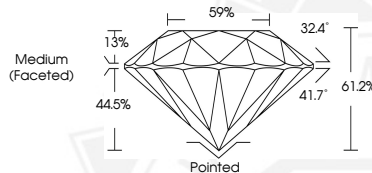
Carat Weight **0.23 CARAT**
Color Grade **F**
Clarity Grade **VVS 1**
Cut Grade **EXCELLENT**

ADDITIONAL GRADING INFORMATION

Polish **EXCELLENT**
Symmetry **EXCELLENT**
Fluorescence **NONE**
Identification Features **FEATHER**
Inscription(s) **IGI 756565159**



Sample Image Used



December 13, 2025

IGI Report Number **756565159**

**ROUND BRILLIANT
NATURAL DIAMOND
3.97 - 4.00 X 2.43 MM**

Carat Weight **0.23 CARAT**
Color Grade **F**
Clarity Grade **VVS 1**
Cut Grade **EXCELLENT**
Polish **EXCELLENT**
Symmetry **EXCELLENT**
Fluorescence **NONE**
Inscription(s) **IGI 756565159**



THIS DOCUMENT WAS PRODUCED WITH THE FOLLOWING SECURITY MEASURES: SPECIAL DOCUMENT PAPER, INK SCREENS, WATERMARK, BACKGROUND DESIGNS, HOLOGRAM AND OTHER SECURITY FEATURES NOT LISTED AND DO EXCEED DOCUMENT SECURITY INDUSTRY GUIDELINES.