



**ELECTRONIC COPY**

756555153  
Report verification at [igi.org](http://igi.org)



December 30, 2025

IGI Report Number **756555153**

Description **NATURAL DIAMOND**

Shape and Cutting Style **EMERALD CUT**

Measurements **6.96 X 4.92 X 3.45 MM**

**GRADING RESULTS**

Carat Weight **1.20 CARAT**

Color Grade **H**

Clarity Grade **VVS 2**

Cut Grade **VERY GOOD**

December 30, 2025  
IGI Report Number **756555153**  
Description **NATURAL DIAMOND**  
Shape and Cutting Style **EMERALD CUT**  
Measurements **6.96 X 4.92 X 3.45 MM**

**GRADING RESULTS**

Carat Weight **1.20 CARAT**

Color Grade **H**

Clarity Grade **VVS 2**

Cut Grade **VERY GOOD**

**ADDITIONAL GRADING INFORMATION**

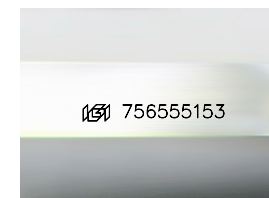
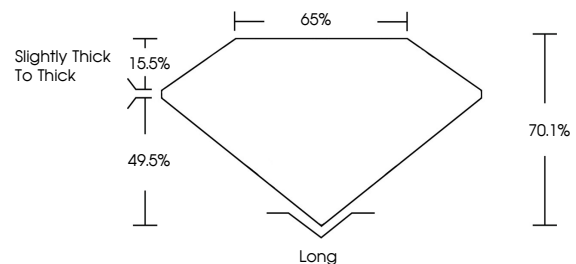
Polish **EXCELLENT**

Symmetry **EXCELLENT**

Fluorescence **NONE**

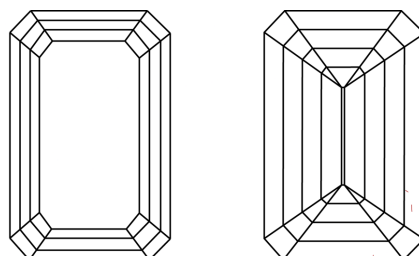
Inscription(s) **756555153**

**PROPORTIONS**



Sample Image Used

**CLARITY CHARACTERISTICS**



**KEY TO SYMBOLS**

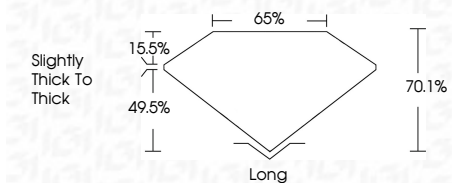
Red symbols indicate internal characteristics.  
Green symbols indicate external characteristics.

**COLOR**

| D - F     | G - J          | K - M           | N - R            | S - Z       | FANCY |
|-----------|----------------|-----------------|------------------|-------------|-------|
| Colorless | Near Colorless | Slightly Tinted | Very Light Color | Light Color |       |

**CLARITY**

| FL       | IF                  | VVS 1-2                     | VS 1-2                 | SI 1-2            | I 1-3    |
|----------|---------------------|-----------------------------|------------------------|-------------------|----------|
| Flawless | Internally Flawless | Very Very Slightly Included | Very Slightly Included | Slightly Included | Included |



**ADDITIONAL GRADING INFORMATION**

Polish **EXCELLENT**

Symmetry **EXCELLENT**

Fluorescence **NONE**

Inscription(s) **756555153**



**IGI**



December 30, 2025  
IGI Report No 756555153  
**EMERALD CUT**  
6.96 X 4.92 X 3.45 MM  
Carat Weight **1.20 CARAT**  
Color Grade **H**  
Clarity Grade **VVS 2**  
Cut Grade **VERY GOOD**  
Depth **70.1%**  
Table **65%**  
Girdle **Slightly thick to thick**  
Culet **Long**  
Polish **EXCELLENT**  
Symmetry **EXCELLENT**  
Fluorescence **NONE**  
Inscription(s) **756555153**