



ELECTRONIC COPY

756555089
Report verification at igi.org

DIAMOND REPORT

December 30, 2025
IGI Report Number **756555089**
Description **NATURAL DIAMOND**
Shape and Cutting Style **SQUARE EMERALD CUT**
Measurements **6.25 X 6.22 X 4.54 MM**

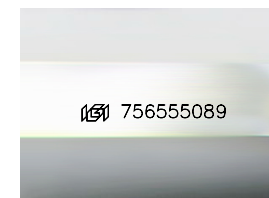
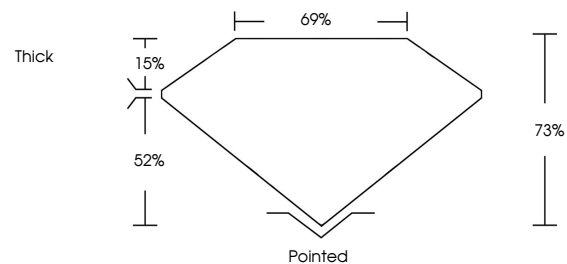
GRADING RESULTS

Carat Weight **1.74 CARAT**
Color Grade **H**
Clarity Grade **VS 1**
Cut Grade **VERY GOOD**

ADDITIONAL GRADING INFORMATION

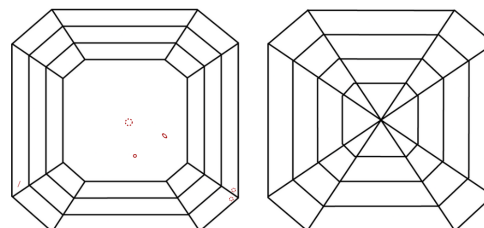
Polish **EXCELLENT**
Symmetry **EXCELLENT**
Fluorescence **NONE**
Inscription(s) **756555089**

PROPORTIONS



Sample Image Used

CLARITY CHARACTERISTICS



KEY TO SYMBOLS

Red symbols indicate internal characteristics.
Green symbols indicate external characteristics.

COLOR

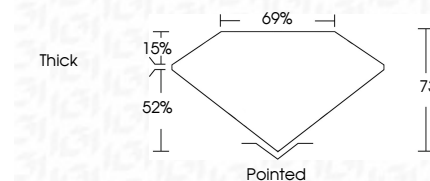
D - F	G - J	K - M	N - R	S - Z	FANCY
Colorless	Near Colorless	Slightly Tinted	Very Light Color	Light Color	

CLARITY

FL	IF	VVS ¹⁻²	VS ¹⁻²	SI ¹⁻²	I ¹⁻³
Flawless	Internally Flawless	Very Very Slightly Included	Very Slightly Included	Slightly Included	Included



December 30, 2025
IGI Report Number **756555089**
Description **NATURAL DIAMOND**
Shape and Cutting Style **SQUARE EMERALD CUT**
Measurements **6.25 X 6.22 X 4.54 MM**
GRADING RESULTS
Carat Weight **1.74 CARAT**
Color Grade **H**
Clarity Grade **VS 1**
Cut Grade **VERY GOOD**



ADDITIONAL GRADING INFORMATION

Polish **EXCELLENT**
Symmetry **EXCELLENT**
Fluorescence **NONE**
Inscription(s) **756555089**



IGI



December 30, 2025
IGI Report No 756555089
SQUARE EMERALD CUT
6.25 X 6.22 X 4.54 MM
1.74 CARAT
H
VS 1
VERY GOOD
75%
69%
Thick
Pointed
EXCELLENT
EXCELLENT
NONE
NONE
 756555089