



**ELECTRONIC COPY**

## DIAMOND REPORT

December 31, 2025	
IGI Report Number	756554940
Description	NATURAL DIAMOND
Shape and Cutting Style	PRINCESS CUT
Measurements	5.52 X 5.50 X 3.83 MM

## GRADING RESULTS

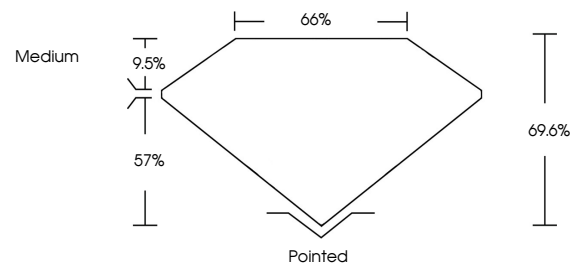
Carat Weight	1.00 CARAT
Color Grade	I
Clarity Grade	VVS 2
Cut Grade	EXCELLENT

### ADDITIONAL GRADING INFORMATION

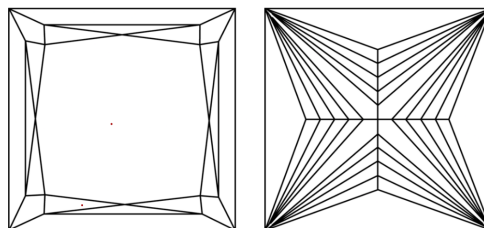
Polish	EXCELLENT
Symmetry	EXCELLENT
Fluorescence	NONE
Inscription(s)	131 756554940

756554940  
Report verification at [igi.org](http://igi.org)

## PROPORTIONS

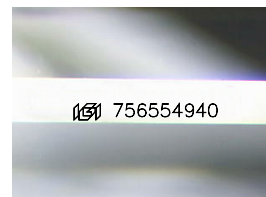


## CLARITY CHARACTERISTICS



## KEY TO SYMBOLS

Red symbols indicate internal characteristics.  
Green symbols indicate external characteristics.



Sample Image Used

**COLOR**

D - F	G - J	K - M	N - R	S - Z	FANCY
Colorless	Near Colorless	Slightly Tinted	Very Light Color	Light Color	

## CLARITY

FL	IF	VVS <sup>1-2</sup>	VS <sup>1-2</sup>	SI <sup>1-2</sup>	I <sup>1-3</sup>
Flawless	Internally Flawless	Very Very Slightly Included	Very Slightly Included	Slightly Included	Included

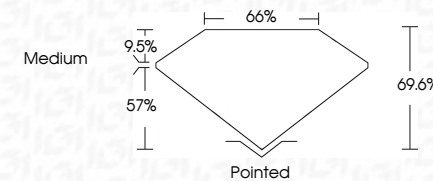
## DIAMOND REPORT



December 31, 2025	
IGI Report Number	756554940
Description	NATURAL DIAMOND
Shape and Cutting Style	PRINCESS CUT
Measurements	5.52 X 5.50 X 3.83 MM

## GRADING RESULTS

Carat Weight	1.00 CARAT
Color Grade	I
Clarity Grade	VVS 2
Cut Grade	EXCELLENT



### ADDITIONAL GRADING INFORMATION

Polish	EXCELLENT
Symmetry	EXCELLENT
Fluorescence	NONE
Inscription(s)	(15) 756554940



© IGI 2020, International Gemological Institute

FD - 10 20



THIS DOCUMENT WAS PRODUCED WITH THE FOLLOWING SECURITY MEASURES: SPECIAL DOCUMENT PAPER, INK SCREENS, WATERMARK, BACKGROUND DESIGNS, HOLOGRAM AND OTHER SECURITY FEATURES NOT LISTED AND DO EXCEED DOCUMENT SECURITY INDUSTRY GUIDELINES

December 31, 2025  
 IGI Report No 756554940  
 PRINCESS CUT

<b>5.52 X 5.50 X 3.83 MM</b>	
Carat Weight	1.00 CARAT
Color Grade	VVS 2
Clarity Grade	EXCELLENT
Cut Grade	69.6%
Depth	66%
Table	Medium
Girdle	
Culet	Pointed
Polish	EXCELLENT
Symmetry	EXCELLENT
Fluorescence	NONE
International	Lab 75456590