



**ELECTRONIC COPY**

756554892  
Report verification at [igi.org](http://igi.org)



December 31, 2025  
IGI Report Number **756554892**  
Description **NATURAL DIAMOND**  
Shape and Cutting Style **EMERALD CUT**  
Measurements **8.31 X 5.88 X 4.07 MM**  
**GRADING RESULTS**  
Carat Weight **2.02 CARATS**  
Color Grade **J**  
Clarity Grade **VS 2**  
Cut Grade **VERY GOOD**

**DIAMOND REPORT**

December 31, 2025  
IGI Report Number **756554892**  
Description **NATURAL DIAMOND**  
Shape and Cutting Style **EMERALD CUT**  
Measurements **8.31 X 5.88 X 4.07 MM**

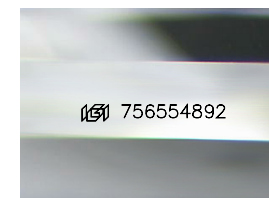
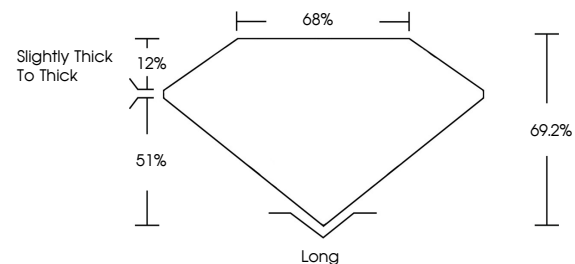
**GRADING RESULTS**

Carat Weight **2.02 CARATS**  
Color Grade **J**  
Clarity Grade **VS 2**  
Cut Grade **VERY GOOD**

**ADDITIONAL GRADING INFORMATION**

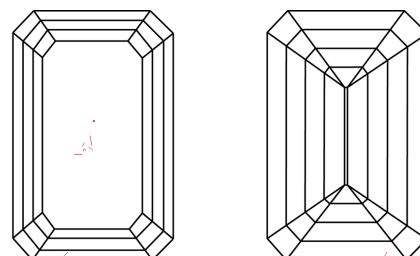
Polish **EXCELLENT**  
Symmetry **EXCELLENT**  
Fluorescence **NONE**  
Inscription(s) **756554892**

**PROPORTIONS**



Sample Image Used

**CLARITY CHARACTERISTICS**



**KEY TO SYMBOLS**

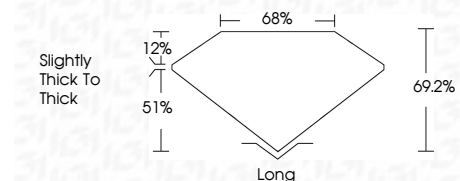
Red symbols indicate internal characteristics.  
Green symbols indicate external characteristics.

**COLOR**

D - F	G - J	K - M	N - R	S - Z	FANCY
Colorless	Near Colorless	Slightly Tinted	Very Light Color	Light Color	

**CLARITY**

FL	IF	VVS <sup>1-2</sup>	VS <sup>1-2</sup>	SI <sup>1-2</sup>	I <sup>1-3</sup>
Flawless	Internally Flawless	Very Very Slightly Included	Very Slightly Included	Slightly Included	Included



**ADDITIONAL GRADING INFORMATION**

Polish **EXCELLENT**  
Symmetry **EXCELLENT**  
Fluorescence **NONE**  
Inscription(s) **756554892**



**IGI**



December 31, 2025	IGI Report No. 756554892	EMERALD CUT	8.31 X 5.88 X 4.07 MM	2.02 CARATS	J	VS 2	VERY GOOD	68%	69.2%	68%	Slightly Thick to Thick	Long	EXCELLENT	EXCELLENT	NONE	756554892
IGI Report No.	756554892	EMERALD CUT	8.31 X 5.88 X 4.07 MM	2.02 CARATS	J	VS 2	VERY GOOD	68%	69.2%	68%	Slightly Thick to Thick	Long	EXCELLENT	EXCELLENT	NONE	756554892