



**ELECTRONIC COPY**

## DIAMOND REPORT

December 18, 2025	
IGI Report Number	756529582
Description	NATURAL DIAMOND
Shape and Cutting Style	ROUND BRILLIANT
Measurements	6.48 - 6.50 X 3.99 MM

## GRADING RESULTS

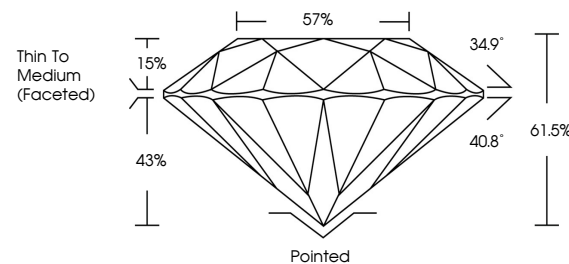
Carat Weight	1.03 CARAT
Color Grade	H
Clarity Grade	I 1
Cut Grade	EXCELLENT

### ADDITIONAL GRADING INFORMATION

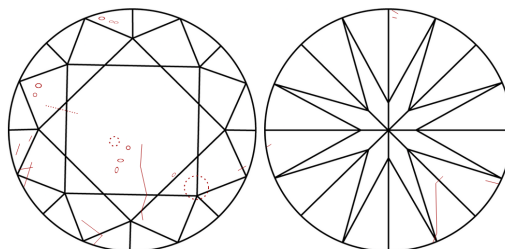
Polish	VERY GOOD
Symmetry	EXCELLENT
Fluorescence	VERY SLIGHT
Inscription(s)	<del>151</del> 756529582
Comments: IDEAL CUT ROUND BRILLIANT	

756529582  
Report verification at [igi.org](http://igi.org)

## PROPORTIONS

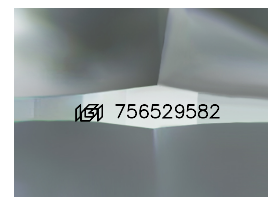


## CLARITY CHARACTERISTICS



## KEY TO SYMBOLS

Red symbols indicate internal characteristics.  
Green symbols indicate external characteristics.



Sample Image Used

**COLOR**

D - F	G - J	K - M	N - R	S - Z	FANCY
Colorless	Near Colorless	Slightly Tinted	Very Light Color	Light Color	

## CLARITY

FL	IF	VVS <sup>1-2</sup>	VS <sup>1-2</sup>	SI <sup>1-2</sup>	I <sup>1-3</sup>
Flawless	Internally Flawless	Very Very Slightly Included	Very Slightly Included	Slightly Included	Included

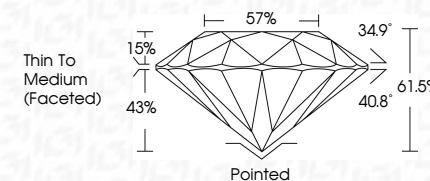
## DIAMOND REPORT



December 18, 2025	
IGI Report Number	756529582
Description	NATURAL DIAMOND
Shape and Cutting Style	ROUND BRILLIANT
Measurements	6.48 - 6.50 X 3.99 MM

## GRADING RESULTS

Carat Weight	1.03 CARAT
Color Grade	H
Clarity Grade	I 1
Cut Grade	EXCELLENT



### ADDITIONAL GRADING INFORMATION

Polish	VERY GOOD
Symmetry	EXCELLENT
Fluorescence	VERY SLIGHT
Inscription(s)	<del>(GSI)</del> 756529582
Comments: IDEAL CUT ROUND BRILLIANT	



IG



© IGI 2020, International Gemological Institute

FD - 10 20

**www.igi.org**



THIS DOCUMENT WAS PRODUCED WITH THE FOLLOWING SECURITY MEASURES: SPECIAL DOCUMENT PAPER, INK SCREENS, WATERMARK, BACKGROUND DESIGNS, HOLOGRAM AND OTHER SECURITY FEATURES NOT LISTED AND DO EXCEED DOCUMENT SECURITY INDUSTRY GUIDELINES

December 18, 2025  
IGI Report No 756529582  
ROUND BRILLIANT

6.48 - 6.50 X 5.95 MM	Carat Weight	1.08 CARAT
	Color Grade	H
	Clarity Grade	I1
	Cut Grade	EXCELLENT
	Depth	61.65%
	Table	57%
	Girdle	Thin To Medium (faced)
	Culet	Pointed
	Polish	VERY GOOD
	Symmetry	EXCELLENT
	Fluorescence	VERY SLIGHT
	Notes	see 765452850

**Comments:**  
IDEAL CUT ROUND BRILLIANT