



ELECTRONIC COPY

DIAMOND REPORT

December 12, 2025	
IGI Report Number	754547257
Description	NATURAL DIAMOND
Shape and Cutting Style	ROUND BRILLIANT
Measurements	11.00 - 11.05 X 6.59 MM

GRADING RESULTS

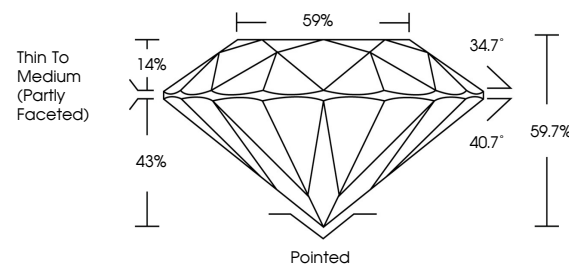
Carat Weight	4.90 CARATS
Color Grade	J
Clarity Grade	VVS 1
Cut Grade	EXCELLENT

ADDITIONAL GRADING INFORMATION

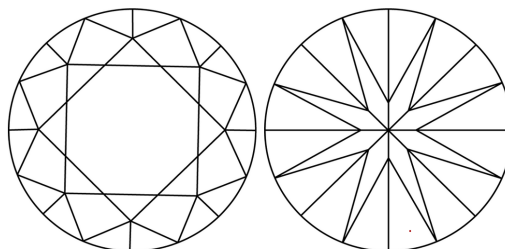
Polish	EXCELLENT
Symmetry	EXCELLENT
Fluorescence	NONE
Inscription(s)	131 754547257

754547257
Report verification at [igi.org](https://www.igi.org)

PROPORTIONS

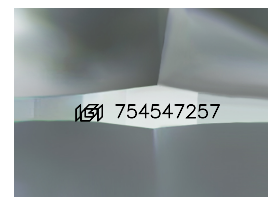


CLARITY CHARACTERISTICS



KEY TO SYMBOLS

Red symbols indicate internal characteristics.
Green symbols indicate external characteristics.



Sample Image Used

COLOR

D - F	G - J	K - M	N - R	S - Z	FANCY
Colorless	Near Colorless	Slightly Tinted	Very Light Color	Light Color	

CLARITY

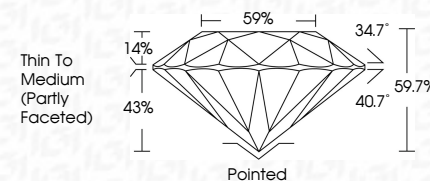
FL	IF	VVS ¹⁻²	VS ¹⁻²	SI ¹⁻²	I ¹⁻³
Flawless	Internally Flawless	Very Very Slightly Included	Very Slightly Included	Slightly Included	Included



December 12, 2025	
IGI Report Number	754547257
Description	NATURAL DIAMOND
Shape and Cutting Style	ROUND BRILLIANT
Measurements	11.00 - 11.05 X 6.59 MM

GRADING RESULTS

Carat Weight	4.90 CARATS
Color Grade	J
Clarity Grade	VVS 1
Cut Grade	EXCELLENT



ADDITIONAL GRADING INFORMATION

Polish	EXCELLENT
Symmetry	EXCELLENT
Fluorescence	NONE
Inscription(s)	(16) 754547251



© IGI 2020, International Gemological Institute

FD - 10 20



THIS DOCUMENT WAS PRODUCED WITH THE FOLLOWING SECURITY MEASURES: SPECIAL DOCUMENT PAPER, INK SCREENS, WATERMARK, BACKGROUND DESIGNS, HOLOGRAM AND OTHER SECURITY FEATURES NOT LISTED AND DO EXCEED DOCUMENT SECURITY INDUSTRY GUIDELINES

www.igi.org

December 12, 2025
 IGI Report No 754547257
 ROUND BRILLIANT

111.00 - 11.05 X 6.59 MM
Carat Weight 4.90 CARATS

11.00 - 11.05 X 6.59 MM	4.90 CARATS	J
Carat Weight		
Color Grade		

Clarify Grade	WS 1
Out Grade	EXCEL

Cut Grade	EXCELLENT
Depth	59.7%
Table	59%

Girdle	Thin To Medium (Partly Faceted)
--------	---------------------------------

	Pointed	EXCELLENT
Culet		
Polish		

	EXCELLENT	NONE
Symmetry		
Fluorescence		

Inscription(s)	059 754547257
----------------	---------------