



DIAMOND REPORT

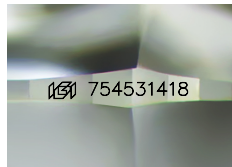
January 8, 2026
IGI Report Number **754531418**
Description **NATURAL DIAMOND**
Shape and Cutting Style **ROUND BRILLIANT**
Measurements **4.24 - 4.27 X 2.67 MM**

GRADING RESULTS

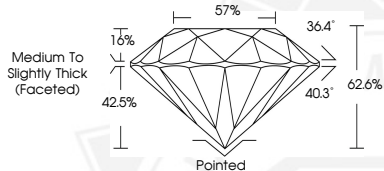
Carat Weight **0.31 CARAT**
Color Grade **K**
Clarity Grade **VVS 1**
Cut Grade **EXCELLENT**

ADDITIONAL GRADING INFORMATION

Polish **EXCELLENT**
Symmetry **EXCELLENT**
Fluorescence **VERY SLIGHT**
Identification Features **CLOUD**
Inscription(s) **IGI 754531418**



Sample Image Used



January 8, 2026
IGI Report Number **754531418**
ROUND BRILLIANT
NATURAL DIAMOND
4.24 - 4.27 X 2.67 MM
Carat Weight **0.31 CARAT**
Color Grade **K**
Clarity Grade **VVS 1**
Cut Grade **EXCELLENT**
Polish **EXCELLENT**
Symmetry **EXCELLENT**
Fluorescence **VERY SLIGHT**
Inscription(s) **IGI 754531418**



January 8, 2026
IGI Report Number **754531418**
ROUND BRILLIANT
NATURAL DIAMOND
4.24 - 4.27 X 2.67 MM
Carat Weight **0.31 CARAT**
Color Grade **K**
Clarity Grade **VVS 1**
Cut Grade **EXCELLENT**
Polish **EXCELLENT**
Symmetry **EXCELLENT**
Fluorescence **VERY SLIGHT**
Inscription(s) **IGI 754531418**



THIS DOCUMENT WAS PRODUCED WITH THE FOLLOWING SECURITY MEASURES: SPECIAL DOCUMENT PAPER, INK SCREENS, WATERMARK, BACKGROUND DESIGNS, HOLOGRAM AND OTHER SECURITY FEATURES NOT LISTED AND DO EXCEED DOCUMENT SECURITY INDUSTRY GUIDELINES.