



December 30, 2025

IGI Report Number 754529551

ROUND BRILLIANT

NATURAL DIAMOND

4.73 - 4.77 X 2.90 MM

Carat Weight **0.40 CARAT**  
 Color Grade **H**  
 Clarity Grade **SI 2**  
 Cut Grade **EXCELLENT**  
 Polish **EXCELLENT**  
 Symmetry **EXCELLENT**  
 Fluorescence **NONE**  
 Inscription(s) **IGI 754529551**

**DIAMOND REPORT**

December 30, 2025

IGI Report Number

**754529551**

Description

**NATURAL DIAMOND**

Shape and Cutting Style

**ROUND BRILLIANT**

Measurements

**4.73 - 4.77 X 2.90 MM**

**GRADING RESULTS**

Carat Weight

**0.40 CARAT**

Color Grade

**H**

Clarity Grade

**SI 2**

Cut Grade

**EXCELLENT**

**ADDITIONAL GRADING INFORMATION**

Polish

**EXCELLENT**

Symmetry

**EXCELLENT**

Fluorescence

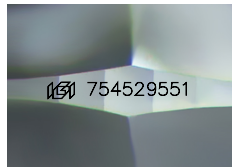
**NONE**

Identification Features

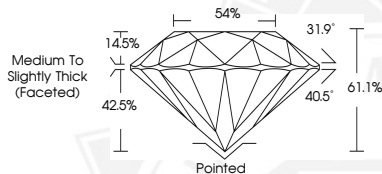
**CRYSTAL, FEATHER**

Inscription(s)

**IGI 754529551**



Sample Image Used



December 30, 2025

IGI Report Number 754529551

ROUND BRILLIANT

NATURAL DIAMOND

4.73 - 4.77 X 2.90 MM

Carat Weight **0.40 CARAT**  
 Color Grade **H**  
 Clarity Grade **SI 2**  
 Cut Grade **EXCELLENT**  
 Polish **EXCELLENT**  
 Symmetry **EXCELLENT**  
 Fluorescence **NONE**  
 Inscription(s) **IGI 754529551**



THIS DOCUMENT WAS PRODUCED WITH THE FOLLOWING SECURITY MEASURES: SPECIAL DOCUMENT PAPER, INK SCREENS, WATERMARK, BACKGROUND DESIGNS, HOLOGRAM AND OTHER SECURITY FEATURES NOT LISTED AND DO EXCEED DOCUMENT SECURITY INDUSTRY GUIDELINES.