



# INTERNATIONAL GEMOLOGICAL INSTITUTE

## DIAMOND REPORT

December 26, 2025

IGI Report Number

754529354

Description

NATURAL DIAMOND

Shape and Cutting Style

ROUND BRILLIANT

Measurements

4.70 - 4.72 X 2.92 MM

## GRADING RESULTS

Carat Weight

0.40 CARAT

Color Grade

H

Clarity Grade

VS 2

Cut Grade

EXCELLENT

## ADDITIONAL GRADING INFORMATION

Polish

EXCELLENT

Symmetry

EXCELLENT

Fluorescence

NONE

Identification Features

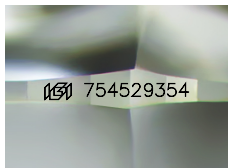
FEATHER, CLOUD, CAVITY

Inscription(s)

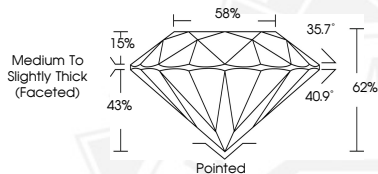
IGI 754529354

Comments: IDEAL CUT ROUND BRILLIANT

ELECTRONIC COPY



Sample Image Used



THIS DOCUMENT WAS PRODUCED WITH THE FOLLOWING SECURITY MEASURES: SPECIAL DOCUMENT PAPER, INK SCREENS, WATERMARK, BACKGROUND DESIGNS, HOLOGRAM AND OTHER SECURITY FEATURES NOT LISTED AND DO EXCEED DOCUMENT SECURITY INDUSTRY GUIDELINES.

For terms & conditions and to verify this report, please visit [www.igi.org](http://www.igi.org)



December 26, 2025

IGI Report Number 754529354

ROUND BRILLIANT

NATURAL DIAMOND

4.70 - 4.72 X 2.92 MM

Carat Weight 0.40 CARAT

Color Grade H

Clarity Grade VS 2

Cut Grade EXCELLENT

Polish EXCELLENT

Symmetry EXCELLENT

Fluorescence NONE

Inscription(s) IGI 754529354

Comments: IDEAL CUT ROUND

BRILLIANT



December 26, 2025

IGI Report Number 754529354

ROUND BRILLIANT

NATURAL DIAMOND

4.70 - 4.72 X 2.92 MM

Carat Weight 0.40 CARAT

Color Grade H

Clarity Grade VS 2

Cut Grade EXCELLENT

Polish EXCELLENT

Symmetry EXCELLENT

Fluorescence NONE

Inscription(s) IGI 754529354

Comments: IDEAL CUT ROUND

BRILLIANT