



# INTERNATIONAL GEMOLOGICAL INSTITUTE

## DIAMOND REPORT

December 23, 2025  
IGI Report Number **754529076**  
Description **NATURAL DIAMOND**  
Shape and Cutting Style **ROUND BRILLIANT**  
Measurements **5.08 - 5.11 X 3.21 MM**

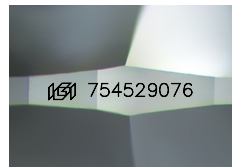
## GRADING RESULTS

Carat Weight **0.51 CARAT**  
Color Grade **H**  
Clarity Grade **SI 1**  
Cut Grade **EXCELLENT**

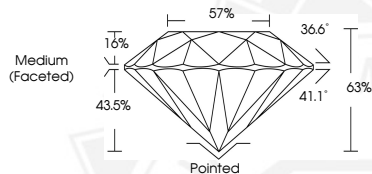
## ADDITIONAL GRADING INFORMATION

Polish **EXCELLENT**  
Symmetry **EXCELLENT**  
Fluorescence **VERY SLIGHT**  
Identification Features **FEATHER, CLOUD**  
Inscription(s) **IGI 754529076**

ELECTRONIC COPY



Sample Image Used



THIS DOCUMENT WAS PRODUCED WITH THE FOLLOWING SECURITY MEASURES: SPECIAL DOCUMENT PAPER, INK SCREENS, WATERMARK, BACKGROUND DESIGNS, HOLOGRAM AND OTHER SECURITY FEATURES NOT LISTED AND DO EXCEED DOCUMENT SECURITY INDUSTRY GUIDELINES.

For terms & conditions and to verify this report, please visit [www.igi.org](http://www.igi.org)



December 23, 2025

IGI Report Number **754529076**

**ROUND BRILLIANT**

**NATURAL DIAMOND**

**5.08 - 5.11 X 3.21 MM**

Carat Weight **0.51 CARAT**

Color Grade **H**

Clarity Grade **SI 1**

Cut Grade **EXCELLENT**

Polish **EXCELLENT**

Symmetry **EXCELLENT**

Fluorescence **VERY SLIGHT**

Inscription(s) **IGI 754529076**



December 23, 2025

IGI Report Number **754529076**

**ROUND BRILLIANT**

**NATURAL DIAMOND**

**5.08 - 5.11 X 3.21 MM**

Carat Weight **0.51 CARAT**

Color Grade **H**

Clarity Grade **SI 1**

Cut Grade **EXCELLENT**

Polish **EXCELLENT**

Symmetry **EXCELLENT**

Fluorescence **VERY SLIGHT**

Inscription(s) **IGI 754529076**