



ELECTRONIC COPY

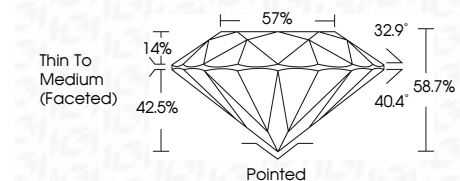
754512315
Report verification at igi.org



June 10, 2026
IGI Report Number **754512315**
Description **NATURAL DIAMOND**
Shape and Cutting Style **ROUND BRILLIANT**
Measurements **8.26 - 8.32 X 4.87 MM**

GRADING RESULTS

Carat Weight **2.01 CARATS**
Color Grade **F**
Clarity Grade **SI 1**
Cut Grade **EXCELLENT**



ADDITIONAL GRADING INFORMATION

Polish **EXCELLENT**
Symmetry **EXCELLENT**
Fluorescence **NONE**
Inscription(s) **IGI 754512315**
Comments: IDEAL CUT ROUND BRILLIANT



IGI

June 10, 2026
IGI Report No 754512315
ROUND BRILLIANT
8.26 - 8.32 X 4.87 MM
2.01 CARATS
F
SI 1
EXCELLENT
58.7%
57%
Thin To Medium (Faceted)
Pointed
EXCELLENT
EXCELLENT
NONE
IGI 754512315
Comments: IDEAL CUT ROUND BRILLIANT

DIAMOND REPORT

June 10, 2026
IGI Report Number **754512315**
Description **NATURAL DIAMOND**
Shape and Cutting Style **ROUND BRILLIANT**
Measurements **8.26 - 8.32 X 4.87 MM**

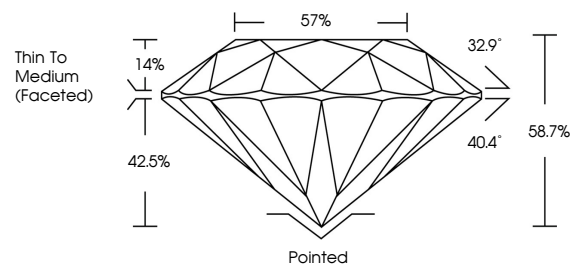
GRADING RESULTS

Carat Weight **2.01 CARATS**
Color Grade **F**
Clarity Grade **SI 1**
Cut Grade **EXCELLENT**

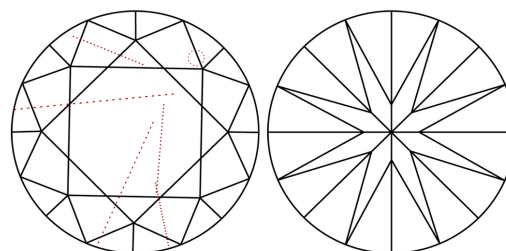
ADDITIONAL GRADING INFORMATION

Polish **EXCELLENT**
Symmetry **EXCELLENT**
Fluorescence **NONE**
Inscription(s) **IGI 754512315**
Comments: IDEAL CUT ROUND BRILLIANT

PROPORTIONS

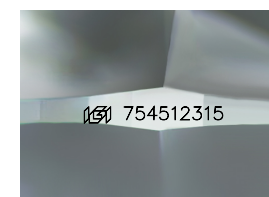


CLARITY CHARACTERISTICS



KEY TO SYMBOLS

Red symbols indicate internal characteristics.
Green symbols indicate external characteristics.



Sample Image Used

COLOR

D - F	G - J	K - M	N - R	S - Z	FANCY
Colorless	Near Colorless	Slightly Tinted	Very Light Color	Light Color	

CLARITY

FL	IF	VVS ¹⁻²	VS ¹⁻²	SI ¹⁻²	I ¹⁻³
Flawless	Internally Flawless	Very Very Slightly Included	Very Slightly Included	Slightly Included	Included

